

**THANK YOU FOR BUYING A HOTPOINT PRODUCT.**

In order to receive a more complete assistance, please register your product on www.hotpoint.eu/register



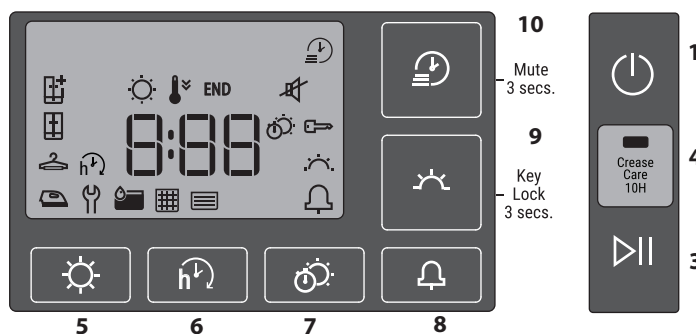
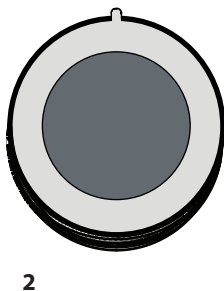
Before using the appliance carefully read the Safety Instruction.

CONTROL PANEL

- 1 ON/OFF Button (hold to Reset)
- 2 Programme Selection Knob
- 3 Start/Pause

Options Buttons

- 4 Crease Care
- 5 Dryness Level
- 6 Start Delay
- 7 Timed Drying
- 8 Cycle End Signal
- 9 Gentle (hold for Key Lock)
- 10 Rapid (hold to Mute)

**INDICATORS**

Dryness Level: ☀ Iron Dry - 🧥 Hanger Dry - 🗄 Cupboard Dry - 📦 Extra Dry

Programme Status: ⚙ Drying - 📉 Cool Down - **END** End of Cycle

Empty water tank - 🧺 **Clean door filter** - 📄 **Clean the condenser unit**

Refer to the troubleshooting section: 🛠 **Failure:** Call after sales service.

FIRST TIME USE

Remove all the tapes used to hold items on the machine. Before you use it, clean the inside of the drum to remove any dust that could have accumulated during transport. Slight odour or vapour may be found if you open the door during its first use, this is normal and should only last a few minutes.

Make sure that the water tank is correctly inserted. Make sure that the drain hose on the back of the dryer is properly connected, either to the dryer's water tank or to your domestic drainage system.

The dryer must be installed in a room with a temperature ranging between 5°C and 35°C to ensure proper operation.

DAILY USE

Doing this will keep your machine working at its BEST:

- remember to empty your water tank after each drying cycle.
- remember to clean your condenser unit regularly (monthly).
- remember to clean your filter after each drying cycle.

Refer to the Care & Maintenance section.

1. Plug the dryer into the power supply socket.
2. Open the door and load garments; always refer to instructions on clothing labels and the max loads indicated in the programme section. Empty pockets. Make sure garments do not get caught between the door and/or the door filter. Do not load items that are dripping wet. Do not tumble dry large, very bulky items.
3. Close the door.
4. Press the "On/Off" button.
5. Select the most suitable programme for the type of fabric in that load.
6. Select the options, if necessary.
7. Press the "Start/Pause" button to begin drying.
8. At the end of the drying cycle, a buzzer will beep. An indicator on the control panel signals the end of the cycle. Pull the load out immediately to prevent the formation of creases on laundry.
9. Turn the machine off by pressing the "On/Off" button, open the door and pull the clothing out. If the machine is not switched off manually, after about a quarter of an hour from the end of the cycle, the appliance turns off automatically to save energy. Note that some programme/option accords with "Crease Care" system. This means that for some hours, after the end of the drying cycle, the drum rotates at regular intervals to prevent the formation of creases. In case of power failure, it is necessary to press the "Start/Pause" button to restart the cycle.

OPENING THE DOOR DURING THE CYCLE

Laundry can be checked while the drying cycle runs and any garments already dry can be removed, while drying continues for the remaining items. After closing the door, press the "Start/Pause" button to resume machine operation.

TRANSPORT AND HANDLING

Never lift the dryer by holding on to its top side.

1. Unplug the dryer
2. Remove the water from the water tank completely.
3. Make sure that door and water tank are properly closed.
4. If the drain hose is connected to your drainage system, re-connect it to the back of the dryer (see "Installation" section in the Safety Instructions).

CARE LABEL

Always check the care labels, especially when placing garments in the tumble dryer for the first time. Below are the most commonly used symbols:



May be tumble dried.



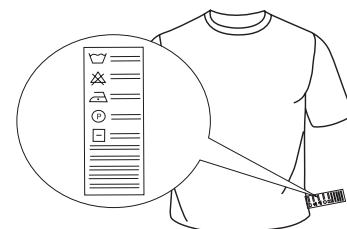
Do not tumble dry.



Tumble dry – high heat.



Tumble dry – low heat.



PROGRAMS

The duration of these programs will depend on the size of the load, types of textiles, the spin speed used in your washer and any extra options selected. **In machines equipped with display, the duration of the cycles is shown on the control panel.** The remaining time is constantly checked and adjusted during the drying cycle to show the best possible estimate.
Option to use - If all your loads on Automatic Cycles are consistently less dry or more dry than you would like, you may increase or decrease the dryness level using the specific option.

Eco Cotton

Max* kg

This is the most efficient programme in terms of energy consumption and is suitable for drying normal wet cotton laundry. The values on the Energy Label are based on this programme.

NOTE: For optimal energy efficiency, select "Cupboard Dry" using dryness level option. To increase the dryness level, select "Extra Dry".

Hygiene

4 kg

This is a cycle using high heat, which has been proven to reduce household bacteria. This cycle is not recommended for all fabrics, use it only for heavyweight fabrics.

Jeans

3 kg

For drying sturdy cotton jeans-wear and garments, like denim, such as trousers and jackets.

Refresh

A short programme suitable for refreshing fibres and garments through the emission of fresh air. Do not use with garments that are still wet. It can be used on with any load size but is more effective with small loads. It lasts about 20 minutes.

Duvet

Programme intended to dry bulky garments, such as a single duvet.

Bed & Bath

Max* kg

This programme is intended for drying cotton towels and bed sheets.

Baby

2 kg

A programme intended to dry babies' garments and linen (cotton and chenille), as well as delicate garments. Do not dry garments with plastic elements.

Pre-Iron

This cycle allows to stretch the fibres of garments thus making ironing and folding easier. Do not use with garments that are still wet. Suitable for small loads of cotton textiles or cotton blends.

Daily

2 kg

Ideal for drying cotton blend or synthetic blend garments at high speed in the washing machine.

Shirts

3 kg

Programme ideal for cotton or cotton/synthetic blend shirts.

Silk

0.5 kg

Gentle drying ideal for silk garments.

Wool

1 kg

Programme for drying wool clothes. It is advisable to turn the garments inside out before drying. If heavy edges remain damp, leave them to dry naturally.

Mixed

4 kg

This programme is ideal for drying cotton and synthetic fabrics together.

Rapid 30'

0.5 kg

Ideal for drying cotton garments spun at high speed in the washing machine.

Synthetics

4 kg

For drying synthetic garments.

OPTIONS

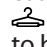
These buttons allow you to personalise the selected programme according to personal requirements.


Not all options are available for all programmes. Some options may be incompatible with ones you have previously set; if so, you will be alerted by the buzzer and/or blinking indicators. If the option is available, the option indicator will stay on. The programme may retain some options selected in previous drying cycles.


Dryness Level

Press the related button several times to obtain a different level of residual moisture on garments. An indicator signals the level being selected.

 **Iron Dry:** very delicate drying. Garments will be more easily ironed immediately after the cycle.

 **Hanger Dry:** a level intended for delicate garments ready to be hanged.

 **Cupboard Dry:** the garments are ready to be folded and put away.

 **Extra Dry:** used for garments to be worn at the end of the cycle.

Start Delay

This option allows you to delay the start of the cycle. Press the corresponding button several times to obtain the required delay. After having reached the max settable time, the option is reset by pressing the button again. An indicator on the control panel signals the time being selected. After having pressed the "Start/Pause" button, the machine signals the time remaining to the start of the cycle. In case of door opening, press the "Start/Pause" button once the door has been closed.

Timed drying

This option allows to set the drying time. Press the corresponding button to set the required time for drying. An indicator on the control panel signals the time being selected.

Cycle End Signal

This option activates a prolonged buzzer at the end of the cycle. Enable it if you do not think you will hear the normal sound at the end of the cycle. This option remains in memory if selected in the previous drying.

Gentle

Enables a more gentle treatment of the laundry by reducing the drying temperature.

Key Lock

This option makes all machine controls inaccessible, except the "On/Off" button. When the machine is on:

- to activate the option, keep the button pressed until the indicator goes on.
- to disable the option, keep the button pressed until the indicator goes off.

This option remains in memory if selected in the previous drying.

Crease Care

This option adds a crease treatment at the end of the cycle by means of a periodic rotation of the drum (duration up to 10 hours). It is particularly suitable when it is not possible to remove the laundry as soon as the drying ends. If this option is used together with the "Start Delay", the crease treatment is also added to the "Start Delay" phase. This option remains in memory if selected in the previous drying.

Mute

This option turns off all sounds of the control panel. Only warnings remain active. When the machine is on:

- to activate the option, keep the button pressed until the indicator goes on.
- to disable the option, keep the button pressed until the indicator goes off.

Rapid

Enables quicker drying.

CARE AND MAINTENANCE

WARNING: unplug the dryer during the cleaning and maintenance procedures.

Emptying the water tank after each cycle (see Fig. A).

Pull the container out of the dryer and empty it into a sink or other suitable drain, then place it back properly. Do not use the dryer without having inserted the container back in place.

Cleaning the door filter after each cycle (see Fig. B).

Pull the filter out and clean it by removing the lint from the filter surface with your hand or a cloth or a vacuum cleaner, then put it back in place.

Do not use the dryer without having reinserted the filter in place.

Remove the door filter as described below:

1. Open the door and pull the filter upwards.
2. Open the filter and remove the lint from all its parts. Replace the filter correctly making sure it is fully seated.

The filter is an essential part for drying. It is intended to collect the lint formed during the drying process. If the filter is clogged, the air flow inside the dryer can become seriously affected: this will increase the drying time and energy consumption, and could damage the dryer. If this procedure is not carried out properly, the dryer may not start.

Cleaning the condenser unit (see Fig. C).

Remove the condenser unit regularly (monthly) and clean off any fluff deposits from the plates by running cold water along its rear end and the two sides. Collect any lint and dispose of it in the bin rather than wash it down the drain. The light on after several cycles is just a reminder to carry on this activity periodically.

Removing the condenser:

1. Open the condenser cover, unlock the three catches by turning them 90° anticlockwise.
2. Pull on the grip to remove the condenser.
3. Clean the surface of the seals.
4. Replace the unit with the arrows pointing upwards, while making sure that the catches are securely fixed.

If you do not clean the dryer as advised above, the dryer will still run but you may damage your machine.



PLEASE SCAN THE QR CODE FOR MORE INFORMATION ON HOW TO KEEP YOUR DRYER CLEAN.

Cleaning the tumble dryer

- The external metal, plastic and rubber parts can be cleaned with a damp cloth.
- Clean the front air intake grille regularly (every 6 months) with a vacuum cleaner to remove any lint, fluff or dust deposits. Furthermore, remove any lint deposits from the front part of the condenser and from the filter area, using a vacuum cleaner every so often.
- Do not use solvents or abrasives.

***MAX LOAD 8 kg (Dry load)**

Power consumption			
off-mode (Po) - Watts	0.15		
left-on mode (PI) - Watts	0.15		
Programmes	kg	kWh	Minutes
Eco Cotton * ◻	8	4.75	156
Eco Cotton ◻	4	2.55	87
Synthetics	4	2.26	110

*This is the most efficient programmes in terms of energy consumption and is suitable for drying normal wet cotton laundry. The values on the Energy Label are based on this programme.

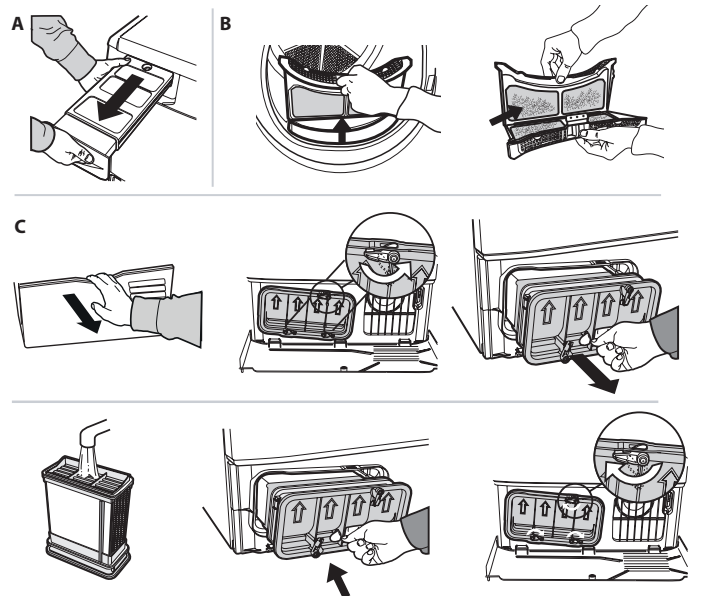
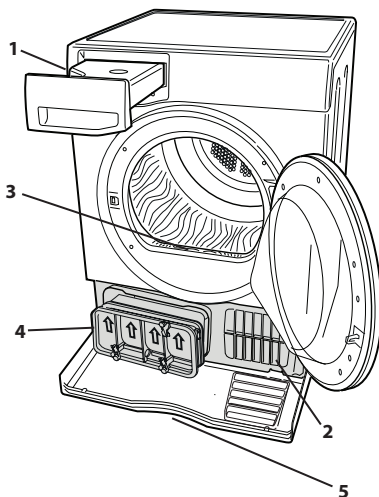
***MAX LOAD 9 kg (Dry load)**

Power consumption			
off-mode (Po) - Watts	0.15		
left-on mode (PI) - Watts	0.15		
Programmes	kg	kWh	Minutes
Eco Cotton * ◻	9	5.23	162
Eco Cotton ◻	4.5	2.79	92
Synthetics	4	2.26	110

*This is the most efficient programmes in terms of energy consumption and is suitable for drying normal wet cotton laundry. The values on the Energy Label are based on this programme. The values reported in the table are obtained with the condensed water drained externally through the drain hose.

PRODUCT DESCRIPTION

1. Water tank
2. Air intake
3. Door filter
4. Condenser unit
5. Condenser cover



TROUBLESHOOTING

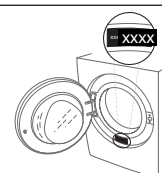
Before contacting the After-sales Service, refer to the table below. Often the malfunctions are minor and can be solved in a few minutes.

Malfunction	Possible cause	Solution
The tumble dryer does not turn on.	The plug is not inserted into the socket.	Insert the plug into the socket.
	The plug is faulty.	Try to plug another appliance in the same socket. Do not use connecting electrical devices to the socket, such as adapters or extensions.
	A power failure occurred.	Wait for the power supply to be restored and switch the fuse on again if necessary.
The tumble dryer does not start.	The door has not been closed properly.	Close the door.
	A time delay was set to the start of the cycle.	For machines equipped with this function: wait for the set delay to end or switch the machine off to reset it. Refer to the Options section.
	The "Start/Pause" button was not pressed in order to start the programme.	Press the "Start/Pause" button.
Garments are wet at cycle completion.	The Key Lock function was enabled (for machines equipped with this option).	Refer to the Options section and if Key Lock was selected, disable it. Switching the machine off is not enough to disable this option.
	Small load.	The automatic programme has not sensed the required final moisture so that the dryer completes the programme and stops. If this happens simply select an additional short period of drying or select extra dry option if available.
The drying times are very long.	Large loads or heavier fabrics	Dryness levels can be modified to the specific dryness desired. Extra Dry is recommended for ready to wear items.
	An appropriate maintenance was not carried out.	Refer to the Care & Maintenance section and perform the operations described.
	The programme, the time and/or the drying level set are not suitable for the type and the amount of load inserted into the dryer.	Refer to Programmes and Options sections to find the programme and options most suitable for the type of load.
The programme did not end.	The garments are too wet.	Carry out a washing cycle with higher spin speed to remove as much water as possible.
	The dryer may be overloaded.	Refer to the Programmes section to check the max load for each programme.
Drum - slight odour or vapour.	A power failure might have occurred.	In case of power failure, it is necessary to press the "Start/Pause" button to restart the cycle.
Lights on	Slight odour or vapour may be found if you open the door during its first use.	This is normal and should only last a few minutes.
Water tank	The water tank is full.	Empty the water tank. Refer to the Care & Maintenance section.
The presence of wrench symbol signals a malfunction.	The machine sensors detected a failure.	Switch the dryer off and unplug it. Open the door immediately and pull the laundry out, to allow the heat to dissipate. Wait for about 15 minutes. Reconnect the dryer to the power supply, load the laundry and restart the drying cycle. If the problem still occurs, contact the After-Sales Service Centre and communicate the letters and digits flashing on the display. For instance: F3 and E2
Lights flashing and buzzer sounding		
Door filter and condenser unit	Failure of the air flow necessary for machine operation.	Clean the door filter and the condenser unit then check whether air intake is free. Carrying out these operations improperly may cause damages. Refer to Care & Maintenance section.
Condenser unit	The condenser unit requires cleaning. The light on is not a malfunction but just a reminder to carry on this activity periodically (monthly/ every 5 drying runs).	Clean the condenser unit. Refer to Care & Maintenance section.



Policies, standard documentation, ordering of spare parts and additional product information can be found by:

- Visiting our website docs.hotpoint.eu and parts-selfservice.whirlpool.com
- Using QR Code
- Alternatively, **contact our After-sales Service** (See phone number in the warranty booklet). When contacting our After-sales Service, please state the codes provided on your product's identification plate.



Hotpoint



400011718051

02/2024