

THANK YOU FOR BUYING A HOTPOINT PRODUCT.

In order to receive a more complete assistance, please register your appliance on [www.hotpoint.eu/register](http://www.hotpoint.eu/register)

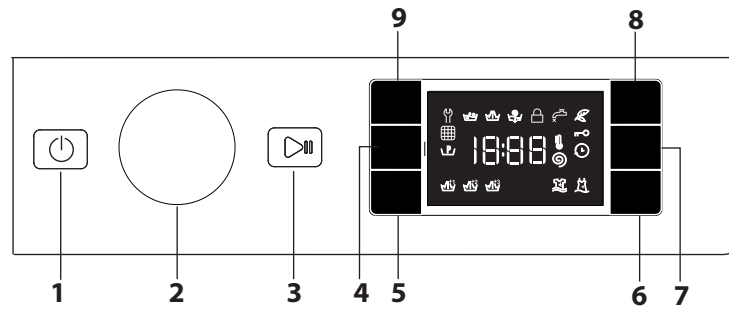
Before using the appliance carefully read the Safety Instruction.



Before using the machine, it is imperative that the transport bolts are removed. For more detailed instructions on how to remove them, see the Installation Guide.

CONTROL PANEL

- 1 "ON/OFF" button
- 2 Programme selector
- 3 "Start/Pause" button
- 4 "Spin Speed" button
- 5 "Multi Rinse" button
- 6 "Cleaning Action" button
- 7 "Start Delay" button
- 8 "Energy saver" / "Key lock" button
- 9 "Temperature" button



**Start Delay** activated

**Key lock** activated

**Washing phase**

Indicates washing phase of the cycle

**Failure: Call Service**

Refer to Troubleshooting section

**Failure: Water filter clogged**

Water cannot be drained; water filter might be blocked

**Failure: No water**

No or not sufficient inlet water.

In the event of any failure, refer to the "TROUBLESHOOTING" section

DISPLAY INDICATORS

- Door locked
- Energy saver activated
- Pre-wash activated

PROGRAMME CHART

Maximum load 8 kg  
Power input in off mode 0.5 W / in left-on mode 8 W

Wash cycle	Temperature		Maximum spin (r.p.m.)	Maximum load (kg)	Duration (h : m)	Detergents and Additives			Recommended detergent		Residual dampness % (***)	Energy consumption kWh	Total water l	Laundry temperature °C
	Setting	Range				Pre-wash	Wash	Fabric softener	Powder	Liquid				
1 <b>Anti Stain 40°</b>	40 °C	❄ - 40 °C	1400	8,0	**	-	●	○	✓	-	-	-	-	-
2 <b>Anti Stain Quick</b>	40 °C	❄ - 40 °C	1200	4,5	**	-	●	○	-	✓	-	-	-	-
3 <b>White</b>	60 °C	❄ - 90 °C	1400	8,0	2:45	● (90°)	●	○	✓	-	49	0,900	90	55
4 <b>Bed &amp; Bath</b>	60 °C	❄ - 60 °C	1400	8,0	**	-	●	○	✓	-	-	-	-	-
5 <b>Eco 40-60 (1)</b>	40 °C	40 °C	1351	8,0	3:38	-	●	○	✓	✓	53	0,730	56	34
			1351	4,0	2:48	-	●	○	✓	✓	53	0,550	53	34
			1351	2,0	2:25	-	●	○	✓	✓	53	0,350	35	23
6 <b>Mixed</b>	40 °C	❄ - 40 °C	1000	8,0	**	-	●	○	-	✓	-	-	-	-
7 <b>Cotton (2)</b>	40 °C	❄ - 60 °C	1400	8,0	3:55	-	●	○	✓	-	49	1,400	105	45
8 <b>Synthetics (3)</b>	40 °C	❄ - 60 °C	1200	4,0	2:55	-	●	○	✓	-	35	0,800	55	43
9 <b>Colours</b>	40 °C	❄ - 40 °C	1400	8,0	**	-	●	○	✓	-	-	-	-	-
10 <b>Rapid 30'</b>	30 °C	❄ - 30 °C	1200 (****)	4,5	0:30	-	●	○	-	✓	71	0,200	45	27
11 <b>Wool</b>	40 °C	❄ - 40 °C	800	2	**	-	●	○	-	✓	-	-	-	-
12 <b>20°C</b>	20 °C	❄ - 20 °C	1400	8,0	1:50	-	●	○	-	✓	49	0,200	90	22
13 <b>Delicates</b>	30 °C	❄ - 30 °C	600 (****)	1	**	-	●	○	-	✓	-	-	-	-
14 <b>Duvet</b>	30 °C	❄ - 30 °C	1000	3,5	**	-	●	○	-	✓	-	-	-	-
<b>Rinse &amp; Spin</b>	-	-	1400	8,0	**	-	-	○	-	-	-	-	-	-
<b>Spin &amp; Drain *</b>	-	-	1400	8,0	**	-	-	-	-	-	-	-	-	-

● Required dosage ○ Optional dosage

The cycle duration indicated on the display or instruction manual is an estimate based on standard conditions. The actual duration may vary in relation to several factors, such as the temperature and pressure of the incoming water, ambient temperature, amount of detergent, load quantity and type, load balancing and any additional options selected. The values given for programmes other than the Eco 40-60 programme are indicative only.

1) **Eco 40-60** - Test wash cycle in compliance with EU Ecodesign regulation 2019/2014. The most efficient programme in terms of energy and water consumption for washing normally soiled cotton laundry. **Note:** spin speed values shown on the display can slightly differs from the values stated in the table.

For all testing institutes:

2) Long cotton cycle: set cycle 7 at a temperature of 40°C.

3) Long synthetics cycle: set cycle 8 at a temperature of 40°C.

\* By selecting the cycle and excluding the spin cycle, the washing machine will drain only.

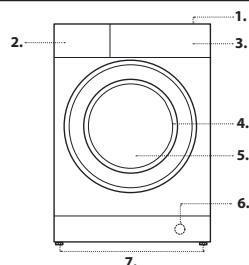
\*\* The duration of the wash cycles can be checked on the display.

\*\*\* After programme end and spinning with maximum selectable spin speed, in default programme setting.

\*\*\*\* The display will show the suggested spin speed as default value.

PRODUCT DESCRIPTION

- 1. Worktop
- 2. Detergent dispenser
- 3. Control panel
- 4. Door handle
- 5. Door
- 6. Water filter
- 7. Adjustable feet (4)



DETERGENT DISPENSER

**Compartment 1: Pre-wash detergent (powder)**

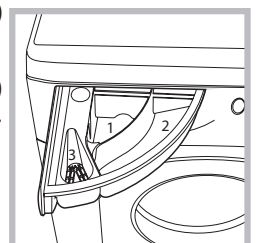
**Compartment 2: Washing detergent (powder or liquid)**

**Compartment 3: Additives (fabric softeners, etc.)**

The fabric softener must not exceed the "MAX" level.

! Use powder detergent for white cotton garments, for pre-washing, and for washing at temperatures over 60°C.

! Follow the instructions given on the detergent packaging.



## PROGRAMMES

Follow the instructions on the symbols of the garment's wash care label. The value indicated in the symbol is the maximum recommended temperature for washing the garment.



### Anti Stain 40

This cycle is suitable to heavily-soiled garments with resistant colours. It ensures a washing class that is higher than the standard class (A class). When running the programme, do not mix garments of different colours. We recommend the use of powder detergent. Pre-treatment with special additives is recommended if there are obstinate stains

### Anti Stain Quick

This cycle is ideal for washing daily stains in 45'. It is ideal for mixed fabrics and coloured garments.

### White

For washing normally to heavily soiled towels, underwear, table and bed linen, etc in resilient cotton and linen. Only when the temperature is selected at 90°C the cycle is provided with a prewash phase before main washing phase. In this case it is recommended to add detergent both, in the prewash and main wash section.

### Bed & Bath

For washing home linen in a single cycle. It optimises the use of fabric softener and allows for saving time and electricity. We recommend the use of powder detergent.

### Eco 40-60

For washing normally soiled cotton garments declared to be washable at 40 °C or 60 °C, together in the same cycle. This is the standard cotton programme and the most efficient in terms of water and energy consumption.

! The cycle runs only at 40°C as per regulation.

### Mixed

To wash mixed and coloured items together.

### Cotton

Suitable for washing towels, underwear, table cloths, etc. made of resistant linen and cotton that are moderately to heavily soiled.

### Synthetics

Suitable for washing moderately soiled garments made of synthetic fibres (e.g. polyester, polyacrylic, viscose, etc.) or mixed synthetic-cotton fibres.

### Colours

For washing coloured cotton garments. This programme is optimised to keep colours bright even after repeated washing.

### Rapid 30'

For washing lightly soiled garments in a short time. Not suitable for wool, silk and garments to be washed by hand.

### Wool - Wool Care

The wool wash cycle of this machine has been approved by The Woolmark Company for the washing of machine washable wool products provided that the products are washed according to the instructions on the garment label and those issued by the manufacturer of this washing machine. The Woolmark symbol is a Certification mark in many countries. M2227.



### 20 °C

For washing lightly soiled cotton garments, at a temperature of 20 °C.

### Delicates

For washing very delicate garments. It is advisable to turn the garments inside out before washing them. For best results, use liquid detergent on delicate garments.

### Duvet

Suitable for washing clothing padded with goose down, such as single duvets (weighing under 3,5 kg), cushions or down jackets. Duvets should be loaded into the drum with their edges folded inwards and no more than ¾ of the total drum volume should be used up. For best results, it is advisable to use liquid detergent to be poured into the detergent drawer.

### Rinse & Spin

Designed for rinsing and spinning.

### Spin & Drain

Designed for spinning and draining the water.

## FIRST TIME USE

To remove any manufacturing debris select the **3** programme at a temperature of 90°C. Pour a small quantity of detergent powder into the main wash **2** compartment of the detergent dispenser (maximum 1/3 of the quantity the detergent manufacturer recommends for lightly soiled laundry). Start the programme **without adding any laundry**.

## DAILY USE

Prepare your laundry according to the recommendations in the "HINTS AND TIPS" section. Load the laundry, close the door, open the water tap and press the "ON/OFF" button to switch the washing machine on, the "Start/Pause" button flashes. Turn the programme selector to the desired programme and select any option if needed. The temperature and spin speed can be changed by pressing the "Temp." button or the "Spin Speed" button. Pull out the detergent dispenser and add the detergent (and additives/softener) now. Observe the dosing recommendations on the detergent pack, then close the detergent dispenser.

### STARTING CYCLE

Press the START/PAUSE button.

The machine will lock the door ( symbol on) and the drum will start to rotate; the door will be unlocked ( symbol OFF) and then locked again ( symbol on) as preparation phase of each washing cycle. The "Clicking" noise is part of the door locking mechanism. Water will enter the drum and start the washing phase once the door is locked.

### PAUSE A RUNNING PROGRAMME

To pause the wash cycle, press the "Start/Pause" button; the indicator light will go off and the remaining time on display flash. To start the wash cycle from the point at which it was interrupted press the button again.

### OPEN THE DOOR, IF REQUIRED

After starting a programme, the "Door locked" indicator lights up to show that the door can not be opened. As long as a wash programme is running, the door remains locked. To open the door while a programme is in progress, press the "Start/Pause" button to pause the programme. Provided the water level and/or temperature is/are not too high, the "Door locked" indicator light goes off and you can open the door. For example to add or remove laundry. Press the "Start/Pause" button again to continue the programme.

### PROGRAMME END

The "Door locked" indicator light goes off and the display shows "End". To switch off the washing machine after programme ends press the "ON/OFF" button, the lights goes off. If you do not press "ON/OFF" button, the washing machine will switch off automatically after about a 10 minutes. Close the water tap, open the door and unload the washing machine. Leave the door ajar to allow the drum to dry.

## OPTIONS

! If the selected option is incompatible with the programme set, the incompatibility will be signalled by a buzzer (3 beeps) and the corresponding indicator light will flash.

! If the selected option is incompatible with another previously set option, only the most recent selection will remain active.

### Energy saver

This option saves energy by not heating the water used to wash your laundry – an advantage both to the environment and to your energy bill. Instead, intensified wash action and water optimisation ensure great wash results in the same average time of a standard cycle. For the best washing results we recommend the usage of a liquid detergent.

### Start Delay

To set the selected programme to start at a later time, press the button to set the desired delay time. Symbol lights on the display when this function is enabled. To cancel the delayed start, press the button again until the value, "0" is shown on the display.

### Cleaning Action

Option "Cleaning Action" makes it possible to optimise washing based on the level of soil in the fabrics and on desired wash cycle intensity. For heavily-soiled garments press "Cleaning Action" button until the " level is reached. This level ensures a high-performance wash due to a larger quantity of water used in the initial phase of the cycle and due to increased drum rotation. It is useful when removing the most stubborn stains. For lightly-soiled garments or a more delicate treatment of the fabrics, press "Cleaning Action" button until the " level is reached. The cycle will reduce drum rotation to ensure washing results that are perfect for delicate garments.

### Multi Rinse

By selecting this option, the efficiency of the rinse is increased and optimal detergent removal is guaranteed. It is particularly useful for sensitive skin. Press the button once, two or three times to select an additional 1, 2 or 3 rinses after the standard cycle rinse and remove all traces of detergent. Press the button again to go back to the "Normal rinse" rinse type.



**Temperature**

Every programme has a predefined temperature. If you want to change the temperature, press the **"Temp"** button. The value appears on the display.

**Spin Speed**

Every programme has a predefined spin speed. If you want to change the spin speed, press the **"Spin Speed"** button. The value appears on the display.

**KEY LOCK** 

To lock the control panel, press and hold the "Energy saver" button for approximately 3 seconds. The symbol  will light up on the display to indicate that the control panel has been locked (with the exception of the "ON/OFF"  button). This prevents unintentional changes to programmes, especially with children near the machine. To unlock the control panel, press and hold the "Energy saver" button for approximately 3 seconds.

**HINTS AND TIPS****Sort your laundry according to**

Type of fabric/care label (cotton, mixed fibres, synthetics, wool, handwash items). Colour (separate coloured and white items, wash new coloured items separately). Delicates (wash small items – like nylon stockings – and items with hooks – like bras – in a cloth bag or pillow case with zip).

**Empty all pockets**

Objects like coins or lighters can damage your laundry as well as the drum.

**Follow the dosage recommendation / additives**

It optimizes the cleaning result, it avoids irritating residues of surplus detergent in your laundry and it saves money by avoiding waste of surplus detergent

**Use low temperature and longer duration**

The most efficient programmes in terms of energy consumption are generally those that perform at lower temperatures and longer duration.

**Observe the load sizes**

Load your washing machine up to the capacity indicated in the "PROGRAMME CHART" table to save water and energy.

**Noise and remaining moisture content**

They are influenced by the spinning speed: the higher the spinning speed in the spinning phase, the higher the noise and the lower the remaining moisture content.

**CLEANING & MAINTENANCE**

*For any cleaning and maintenance, switch off and unplug the washing machine. Do not use flammable fluids to clean the washing machine. Clean and maintain your washing machine periodically (at least 4 times per year).*

**Cleaning the outside of the washing machine**

Use a soft damp cloth to clean the outer parts of the washing machine. Do not use glass or general purpose cleaners, scouring powder or similar to clean the control panel – these substances might damage the printing.

**Checking the water supply hose**

Check the inlet hose regularly for brittleness and cracks. If damaged, replace it by a new hose available through our After-Sales Service or your specialist dealer.

**Cleaning the water filter / draining residual water**

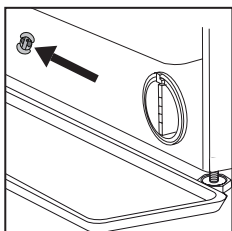
*Switch off and unplug the washing machine, take out the kitchen plinth before cleaning the water filter or draining residual water.*

*The kitchen plinth must be mounted back all the time once the cleaning operation is over.*

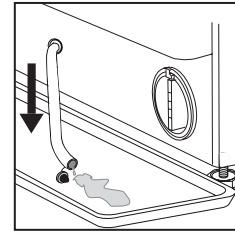
*If you used a hot wash programme, wait until the water has cooled down before draining any water. Clean the water filter regularly, to avoid that the water cannot drain after the wash due to obstruction of the filter. If the water cannot drain, the display indicates that the water filter may be clogged.*

1. Place a container close to the pump to collect any spillage.

2. **Remove, pulling it out, the "emergency drain hose" from the base of the washing machine.**



Remove the stopper of the "emergency drain hose" at the end of the hose and let the water flow into the container.

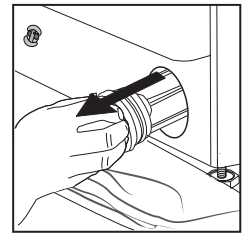
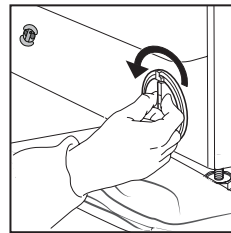


3. Turn the exhaust filter handle and pull it out of the housing.

When the container of plinth is full with water, plug the stopper to the hose end, and reinsert the small hose in the washing machine's base. After, empty the container.

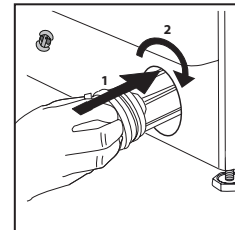
Afterwards firmly close the emergency drain hose with the stopper.

4. **Remove filter:** Lay a cotton cloth beneath the water filter, which can absorb a small amount of rest water. Then remove the water filter by turning it out anticlockwise.



5. Clean the water filter: remove residues in the filter and clean it under running water.

6. Insert the water filter: Reinsert the water filter again by turning it in clockwise direction. Make sure to turn it in as far as it goes; the filter handle must be in vertical position. To test water tightness of the water filter, you can pour about 1 liter of water into the detergent dispenser.



Then reinstall the kitchen plinth.




**TRANSPORT AND HANDLING**

**Never lift the washing machine by holding it at the worktop.**

Pull out the mains plug, and close the water tap. Make sure that door and detergent dispenser are properly closed. Disconnect the inlet hose from the water tap, and remove the drain hose from your draining point. Remove all rest water from the hoses, and fix them so that they cannot get damaged during transport. Refit the transport bolts. Follow the instructions for removing the transport bolts in the Installation Guide in reverse order.

## TROUBLESHOOTING

The washing machine may sometimes not work properly for certain reasons. Before calling the After-sales service, it is recommended to check to see if the problem can be easily resolved using the following list.

Anomalies:	Possible causes / Solution:
<b>The washing machine does not turn on.</b>	<ul style="list-style-type: none"> <li>The plug is not inserted into the electrical outlet, or not enough to make contact.</li> <li>There has been a power failure.</li> </ul>
<b>The wash cycle does not start.</b>	<ul style="list-style-type: none"> <li>The door is not fully closed.</li> <li>The "ON/OFF"  button has not been pressed.</li> <li>The "Start/Pause"  button has not been pressed.</li> <li>The water tap is not open.</li> <li>A "Start Delay" has been set.</li> </ul>
<b>The washing machine does not fill with water (the message "h2o" is shown on the display).</b>	<ul style="list-style-type: none"> <li>The water intake hose is not connected to the tap.</li> <li>The hose is bent.</li> <li>The water tap is not open.</li> <li>The mains water supply has been shut off.</li> <li>There is not enough pressure.</li> <li>The "Start/Pause"  button has not been pressed.</li> </ul>
<b>The washing machine loads and drains water continuously.</b>	<ul style="list-style-type: none"> <li>The drain hose has not been installed at 65 to 100 cm from the ground.</li> <li>The end of the drain hose is immersed in water.</li> <li>The drain connector on the wall does not have an air vent.</li> <li>If the problem persists after having performed these checks, close the water tap, shut off the washing machine, and call the After-sales service. If the dwelling is located on one of the uppermost floors of a building, a siphon effect can sometimes occur, thus causing the washing machine to load and drain water continuously. Special anti-siphon valves are available on the market to prevent these types of problems.</li> </ul>
<b>The washing machine does not drain or does not spin.</b>	<ul style="list-style-type: none"> <li>The programme does not include the draining function: with certain programmes it must be activated manually.</li> <li>The drain hose is bent.</li> <li>The drain line is obstructed.</li> </ul>
<b>The washing machine vibrates excessively during the spin cycle.</b>	<ul style="list-style-type: none"> <li>At the time of installation, the drum was not properly unblocked.</li> <li>The washing machine is not level.</li> <li>The washing machine is squeezed between furniture and the wall.</li> </ul>
<b>The washing machine leaks water.</b>	<ul style="list-style-type: none"> <li>The water intake hose has not been tightened properly.</li> <li>The detergent dispenser is clogged.</li> <li>The drain hose has not been properly fastened.</li> </ul>
<b>The machine is locked and the display flashes, indicating an error code (e.g. F-01, F-..).</b>	<ul style="list-style-type: none"> <li>Shut off the machine, disconnect the plug from the outlet, and wait about 1 minute before turning it back on.</li> <li>If the problem persists, call the After-sales service.</li> </ul>
<b>Too much foam is formed.</b>	<ul style="list-style-type: none"> <li>The detergent is not compatible with the washing machine (it must bear the wording "for washing machines", "for hand washing and washing machines", or something similar).</li> <li>The dosage was excessive.</li> </ul>
<b>Door is locked, with or without failure indication, and the programme does not run.</b>	<ul style="list-style-type: none"> <li>Door is locked in case of power breakdown. Programme will continue automatically as soon as the mains is available again.</li> <li>Washing machine is in a standstill. Programme will continue automatically after the origin of the standstill does not persist anymore.</li> </ul>

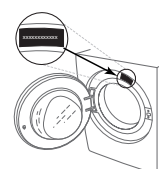
**DEMO MODE:** to deactivate this function, switch the washing machine OFF. Then press and hold "Start/Pause"  button, within 5 seconds press also "ON/OFF"  button and hold both buttons for 2 seconds.

### Regulatory documentation, standard documentation, ordering spare parts and other product information can be found:

- By visiting our website [docs.hotpoint.eu](https://docs.hotpoint.eu) and [parts-selfservice.europeanappliances.com](https://parts-selfservice.europeanappliances.com)
- Using QR Code
- Alternatively, **contact our After-sales Service** (See phone number in the warranty booklet). When contacting our After-sales Service, please state the codes provided on your product's identification plate.

For User's Repair & Maintenance Information visit [www.hotpoint.eu](https://www.hotpoint.eu)

You can find more information about your model online at <https://eprel.ec.europa.eu/> which is the official EU EPREL product database. After selecting the Product Category, enter the Model Identifier of the product. The Model Identifier is made up of letters and numbers and can be found on the identification plate, as Mod. (see image on the right).



# CLEANING & MAINTENANCE

**For any cleaning and maintenance, switch off and unplug the washing machine.  
Do not use flammable fluids to clean the washing machine.**

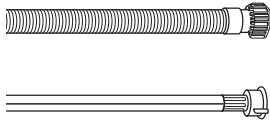
## CLEANING THE OUTSIDE OF THE WASHING MACHINE

Use a soft damp cloth to clean the outer parts of the washing machine.

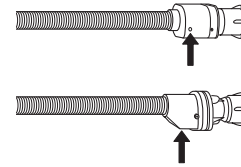
Do not use glass or general purpose cleaners, scouring powder or similar to clean the control panel – these substances might damage the printing.

## CHECKING THE WATER SUPPLY HOSE

Check the inlet hose regularly for brittleness and cracks. If damaged, replace it by a new hose available through our After-Sales Service or your specialist dealer. Depending on the hose type:



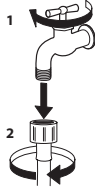
If the inlet hose has a transparent coating, periodically check if the colour intensifies locally. If yes, the hose may have a leak and should be replaced.



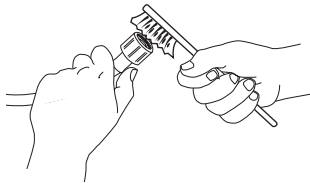
For water stop hoses: check the small safety valve inspection window (see arrow). If it is red, the water stop function was triggered, and the hose must be replaced by a new one. For unscrewing this hose, press the release button (if available) while unscrewing the hose.

## CLEANING THE MESH FILTERS IN THE WATER SUPPLY HOSE

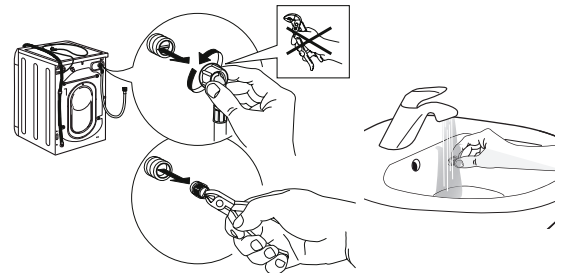
1. Close water tap and unscrew the inlet hose.



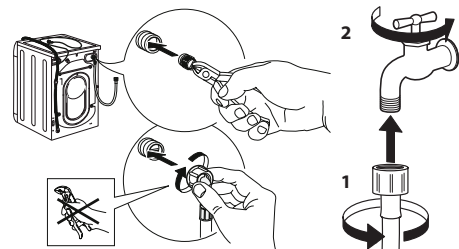
2. Clean the mesh filter at the hose's end carefully with a fine brush.



3. Now unscrew the inlet hose on the back of the washing machine by hand. Pull out the mesh filter from the valve on the back of the washing machine with pliers and carefully clean it.



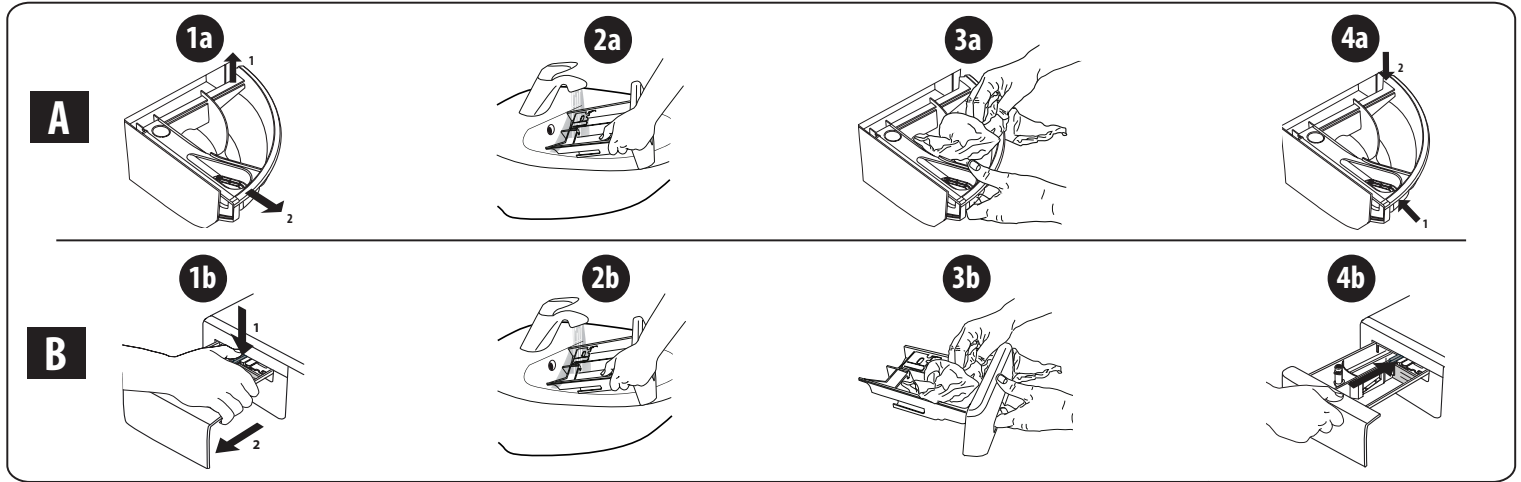
4. Insert the mesh filter again. Connect the inlet hose to water tap and washing machine again. Do not use a tool to connect the inlet hose. Open the water tap and check that all connections are tight.



## CLEANING THE DETERGENT DISPENSER

Remove the dispenser by raising it and pulling it out (see figure).

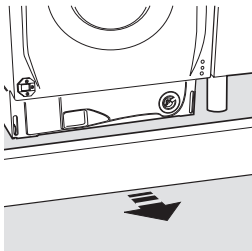
Wash it under running water; this operation should be repeated frequently.



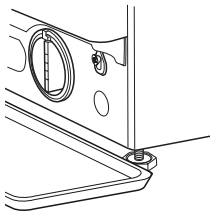
## CLEANING THE WATER FILTER / DRAINING RESIDUAL WATER

**Switch off and unplug the washing machine before cleaning the water filter or draining residual water. If you used a hot wash programme, wait until the water has cooled down before draining any water. Clean the water filter regularly every 3 months, to avoid that the water cannot drain after the wash due to obstruction of the filter. If the water cannot drain, the display indicates that the water filter may be clogged.**

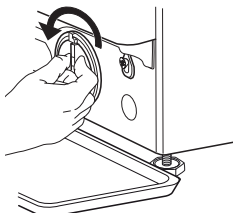
1. Remove plinth.



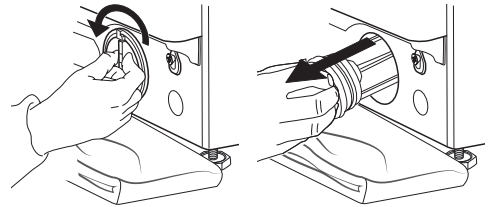
2. Container for the drained water:  
Place a low and wide container under the water filter in order to collect the residual water.



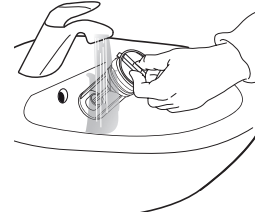
3. Drain the water:  
Slowly turn the filter counter-clockwise until all the water has come out. Allow the water to flow out without removing the filter. Once the container is full, close the water filter by turning it clockwise. Empty the container. Repeat the procedure until all the water has been drained.



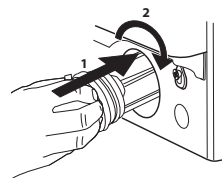
4. Remove filter: Lay a cotton cloth beneath the water filter, which can absorb a small amount of rest water. Then remove the water filter by turning it out anticlockwise.



5. Clean the water filter: remove residues in the filter and clean it under running water.



6. Insert the water filter and reinstall the plinth: Reinsert the water filter again by turning it in clockwise direction. Make sure to turn it in as far as it goes; the filter handle must be in vertical position. To test water tightness of the water filter, you can pour about 1 liter of water into the detergent dispenser. Then reinstall the plinth.



# TRANSPORT AND HANDLING

**Never lift the washing machine by holding it at the worktop.**

1. Pull out the mains plug, and close the water tap.
2. Make sure that door and detergent dispenser are properly closed.
3. Disconnect the inlet hose from the water tap, and remove the drain hose from your draining point. Remove all rest water from the hoses, and fix them so that they cannot get damaged during transport.
4. Refit the transport bolts. Follow the instructions for removing the transport bolts in the "Installation Guide" in reverse order.

**Important:** Do not transport the washing machine without having fixed the transport bolts.

## AFTER-SALES SERVICE

### BEFORE CALLING THE AFTER-SALES SERVICE

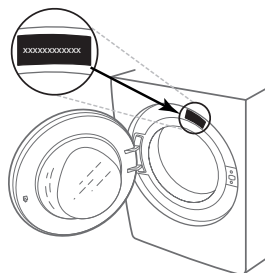
1. See if you can solve the problem by yourself with the help of the suggestions given in the **TROUBLESHOOTING**

### IF AFTER THE ABOVE CHECKS THE FAULT STILL OCCURS, GET IN TOUCH WITH THE NEAREST AFTER-SALES SERVICE

To receive assistance, call the number shown on the warranty booklet.

When contacting our Client After sales service, always specify:

- a brief description of the fault;
- the type and exact model of the appliance;



2. Switch the appliance off and back on again to see if the fault persists.

- the service number (number after the word Service on the rating plate).

**SERVICE** 0000 000 00000



- your full address;
- your telephone number.

If any repairs are required, please contact an authorised after-sales service (to guarantee that original spare parts will be used and repairs carried out correctly).