

KitchenAid

STAND BLENDER

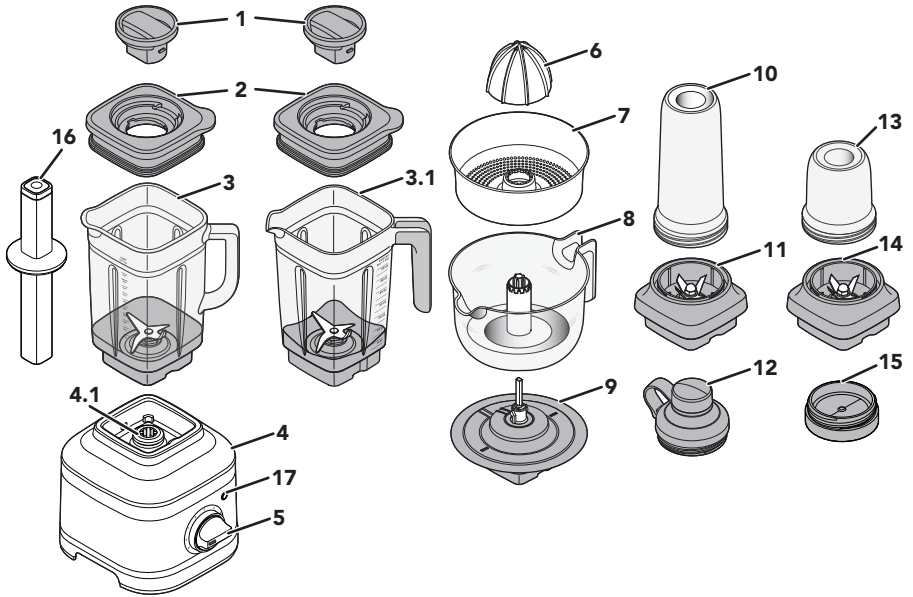
5KSB40**

PRODUCT GUIDE



W11566754A

PARTS AND FEATURES








1. Lid Centre Cap*
2. Lid with Vent Well
3. Glass Jar (1.4 L capacity)
- 3.1 Jar** (1.6 L capacity)
4. Base
- 4.1 Interlock
5. Control Dial
6. Reamer**
7. Pulp Strainer/Basket**
8. Juice Container** (1 L capacity)
9. Gear Assembly**
10. Personal Jar** (0.5 L capacity)
11. Blade Assembly of Personal Jar**
12. Personal Jar Easy-Drink Lid**
13. Small Batch Jar** (0.2 L capacity)
14. Blade Assembly of Small Batch Jar**
15. Small Batch Jar Lid**
16. Tamper***
17. START/STOP Button with LED Ring

*Contents may vary

**Accessories only included with certain models.

***Available as an optional accessory.

| | | | | | | |
|------------------------|--------------------------|--|--|--|--|--|
| | |  |  |  |  |  |
| | Accessory model number | 5KSB2048JG-A | N/A | 5KSB2030-PJB | 5KSB1CPA | KSB4048TPR |
| | Part numbers (see above) | 1 - 2 - 3 | | 10 - 11 - 12 | 6 - 7 - 8 - 9 | 16 |
| Included in main model | 5KSB4026 | • | • | - | - | - |
| | 5KSB4034 | • | • | • | - | - |
| | 5KSB4054 | • | • | - | • | - |

PRODUCT SAFETY

Your safety and the safety of others are very important.

We have provided many important safety messages in this manual and on your appliance. Always read and obey all safety messages.



This is the safety alert symbol.

This symbol alerts you to potential hazards that can kill or hurt you and others.

All safety messages will follow the safety alert symbol and either the word "DANGER" or "WARNING." These words mean:

⚠ DANGER

You can be killed or seriously injured if you don't immediately follow instructions.

⚠ WARNING

You can be killed or seriously injured if you don't follow instructions.

All safety messages will tell you what the potential hazard is, tell you how to reduce the chance of injury, and tell you what can happen if the instructions are not followed.

IMPORTANT SAFEGUARDS

When using electrical appliances, basic safety precautions should always be followed, including the following:

- 1.** Read all instructions. Misuse of appliance may result in personal injury.
- 2.** European Union only: Appliances can be used by persons with reduced physical, sensory or mental capabilities or lack of experience and knowledge if they have been given supervision or instruction concerning use of the appliance in a safe way and understand the hazards involved.
- 3.** European Union only: This appliance shall not be used by children. Keep the appliance and its cord out of reach of children.
- 4.** This appliance is not intended for use by persons (including children) with reduced physical, sensory or mental capabilities, or lack of experience and knowledge, unless they have been given supervision or instruction concerning use of the appliance by a person responsible for their safety.
- 5.** Children should be supervised to ensure that they do not play with the appliance.
- 6.** To protect against risk of electrical shock do not put the Stand Blender Base in water or other liquid.
- 7.** Turn the appliance off (O), then unplug from the outlet when not in use, before assembling or disassembling parts and before cleaning. To unplug, grasp the plug and pull from the outlet. Never pull from the power cord.
- 8.** Avoid contacting moving parts.
- 9.** Do not operate any appliance with a damaged cord or plug, or after the appliance malfunctions, or is dropped or damaged in any manner. Return appliance to the nearest Authorised Service Facility for examination, repair, or electrical or mechanical adjustment.
- 10.** Do not use the appliance outdoors.
- 11.** Do not let cord hang over edge of table or counter.
- 12.** Keep hands and utensils out of container while blending to reduce the risk of severe injury to persons or damage to the Blender. A scraper may be used but must be used only when the Blender is not running.
- 13.** Never leave the appliance unattended while it is in operation.

14. Blades are sharp. Care should be taken when handling the sharp cutting blades, emptying the Jar and during cleaning.
15. Be careful if hot liquid is poured into the Blender as it can be ejected out of the appliance due to sudden steaming.
16. If the supply cord is damaged, it must be replaced by KitchenAid, its service agent or similarly qualified persons in order to avoid a hazard.
17. Allow the appliance to cool completely before putting on or taking off parts, and before cleaning the appliance.
18. Refer to the “Care and Cleaning” section for instructions on cleaning the surfaces in contact with food.
19. Always operate the Blender with cover in place.
20. When blending hot liquids or ingredients, Lid Centre Cap should remain in place over the lid opening. Always start on lowest speed and slowly ramp to desired speed when blending hot liquids or ingredients.
21. Do not blend hot liquids and ingredients in the Personal Jar or Small Batch Jar.
22. To reduce the risk of injury, never place Blade Assembly on the Base without Personal Jar or Small Batch Jar properly attached.
23. This appliance incorporates an earth connection for functional purposes only.
24. Flashing light indicates ready to operate - avoid any contact with blades or moveable parts.
25. The use of accessories/attachments not recommended by KitchenAid may result in fire, electric shock or injury to persons.
26. This appliance is intended to be used in household and similar applications such as:
 - staff kitchen areas in shops, offices, or other working environments;
 - farmhouses;
 - by clients in hotels, motels and other residential type environments;
 - bed and breakfast type environments.

SAVE THESE INSTRUCTIONS

For complete details on product information, instructions and videos, including Guarantee information, visit www.kitchenaid.co.uk/product-tips, www.kitchenaid.ie/product-tips, or www.KitchenAid.eu.

ELECTRICAL REQUIREMENTS

WARNING

Electrical Shock Hazard



Plug into an earthed outlet.

Do not remove earth prong.

Do not use an adapter.

Do not use an extension cord.

Failure to follow these instructions can result in death, fire, or electrical shock.

Voltage: 220-240 V~

Frequency: 50-60 Hz

NOTE: If the plug does not fit in the outlet, contact a qualified electrician. Do not modify the plug in any way. Do not use an adapter.

Do not use an extension cord. If the power supply cord is too short, have a qualified electrician or service technician to install an outlet near the appliance.





The power rating of your Stand Blender is printed on the serial plate.

The maximum rating is based on the attachment that draws the greatest load (power). Other recommended attachments may draw significantly less power.

GETTING STARTED

BLENDER FUNCTION GUIDE

It features variable speeds (from 1 to 5) and Pulse (P) function to customize blending. Also, pre-programmed recipe settings like, Ice Crush (🧊), Icy Drink (🍹), and Smoothie (🥤) are designed to deliver optimal results. Use the self-cleaning cycle (🔄) after blending for easy clean up. We encourage you to experiment to find the best speed for your favourite recipes.

| SETTING | DESCRIPTION | BLENDING TIME (MINUTES: SECONDS) | SUGGESTED ITEMS TO BLEND |
|--|--|----------------------------------|--|
| Pulse (P) | Allows precise control of the duration and frequency of blending. | Manual | Salsa, crumb topping, chopped nuts, fruits or vegetables & more. |
| Variable Speed (1-5) | Manual speeds offer ultimate control of the Blender. | 3:00 | Fruits, soups, sauces, doughs, vegetables, butters, nuts, dips, frozen desserts, purées. |
| Ice Crush  | The Blender runs at optimal speed to crush ice. | 00:30 | To crush and chop ice without adding any liquid ingredients. |
| Icy Drink  | Gradually ramp up to full power to blend hard foods. | 00:30 | Ice, whole fruits or vegetables, or frozen fruits. Use for drinks as margaritas, daiquiris, and blended ice coffee drinks. |
| Smoothie  | The Blender will operate at the high speed to make purées of items or ingredients. | 00:45 | Fruits, vegetables, ice cream and yoghurt into thick smoothie, blended drinks and milkshakes, etc. |
| Clean  | Quick pulses of power and high speeds work to clean the Blender Jar. | 00:13 | Half of the Jar filled with warm water and 1-2 drops of dish soap. |

BLENDER ACCESSORY GUIDE

| ACCESSORIES**** | CAPACITY | SPEED | SUGGESTED ITEMS TO BLEND |
|--------------------------|----------|--|---|
| Blender Jar | 1.6 L | All speeds, Pulse, and Preset recipes. | Full recipe smoothie, icy drinks, shakes/ malts, dips, spreads and more. |
| Glass Blender Jar | 1.4 L | | Individual smoothies, icy drinks, shakes/ malts and lower volume recipes. |
| Personal Jar | 0.5 L | | Small volume recipes - purées, sauces, baby food, dressings, marinades, pesto and more. |
| Small Batch Jar | 0.2 L | All speeds, Pulse, and Preset recipes. | Small volume recipes - purées, sauces, baby food, dressings, marinades, pesto and more. |
| Citrus Press | 1 L | Speed 1 | Citrus juice, grapefruit juice and more. |

****Available with selected models only.

PRODUCT USAGE

Before first use, clean all parts and accessories (see “Care and Cleaning” section). Be sure the countertop beneath the Blender and surrounding areas are dry and clean.

IMPORTANT: When moving your Blender, always support/lift from Blender Base. Base will become disengaged from Jar if carried by Blender Jar or Blender Jar handle only.

⚠ WARNING

Electrical Shock Hazard



Plug into an earthed outlet.

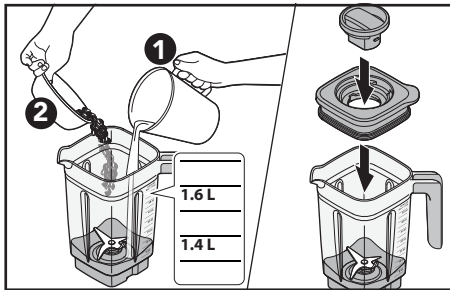
Do not remove earth prong.

Do not use an adapter.

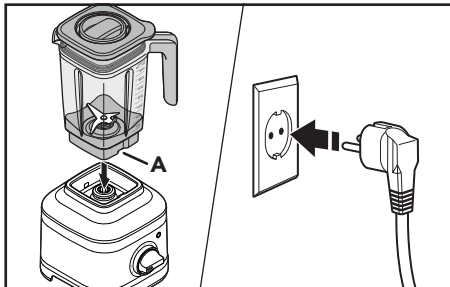
Do not use an extension cord.

Failure to follow these instructions can result in death, fire, or electrical shock.

1. Add ingredients into Jar (maximum 1.6 L or 1.4 L for Glass Jar). Secure the Lid and Lid Centre Cap.

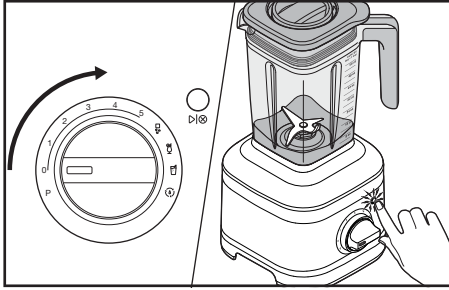


2. Place and align the Jar with the Slot (A) to fit inside the jar pad, facing Jar handle towards Control Dial. Plug the Blender into an earthed outlet.

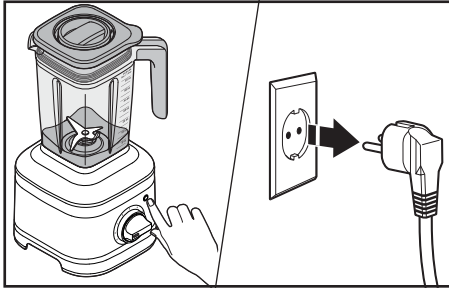


A. Slot

3. Turn from (O) to desired speed or preset recipe program. Press (▶|⊗) to start. See “Blender Function Guide” for more details.

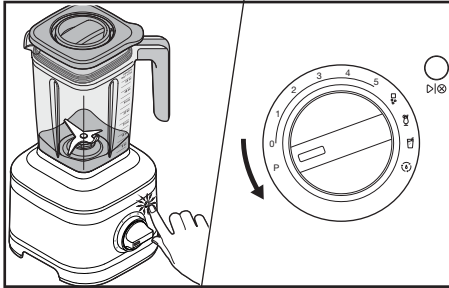


4. When finished, press (▶|⊗) to stop. Unplug before removing the Blender Jar.

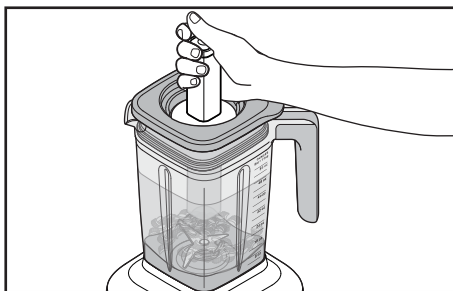


NOTE: For variable speeds (from 1 to 5), the Blender will stop automatically after 3 minutes of run time. For preset recipe program, the Blender will automatically stop blending once the cycle is complete.

5. **Pulse mode:** Press (▶|⊗). Turn and hold the Control Dial from (O) to (P) as per desired interval of time. When finished, release the Control Dial to stop.



6. **Tamper Accessory*****: Remove the Lid Centre Cap only. Stir or press contents down towards the blade. Then, place the Lid Centre Cap back before resuming blending.



NOTE: If blending hot liquids and ingredients, start on a low speed and then ramp up to the desired speed. Use variable speed and run for 1-2 minutes.

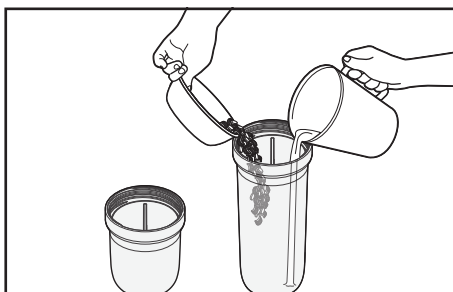
IMPORTANT: Allow the Blender to fully stop before removing the Lid, Blender Jar, or pouring out blended ingredients.

USING THE PERSONAL JAR/SMALL BATCH JAR

The Personal Jar is perfect in size for single servings or smaller recipes and handy to carry with you on the go. And, the Small Batch Jar is perfect for smaller recipes like sauces, dressings, marinades and more.

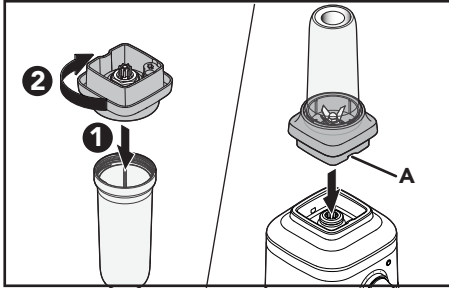
IMPORTANT: Do not blend hot liquids and ingredients in the Personal Jar.

1. **Personal Jar:** Add ingredients (maximum 0.5 L). Add ice or frozen items, then leafy greens, then soft foods and liquids at last. **Small Batch Jar:** Add ingredients (maximum 0.2 L).



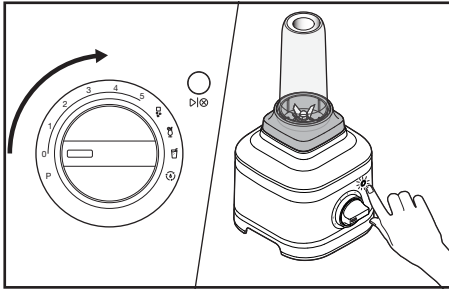
***Available as an optional accessory.

- Secure the Blade Assembly on the Jar and rotate it clockwise until it is tight. Place it on the Base.

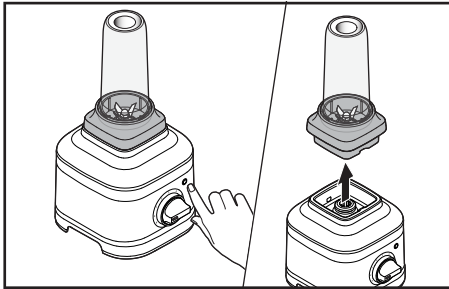


A. Slot

- Turn from (O) to desired speed or preset recipe program. Press (▶⊗) to start. See "Blender Function Guide" for more details.



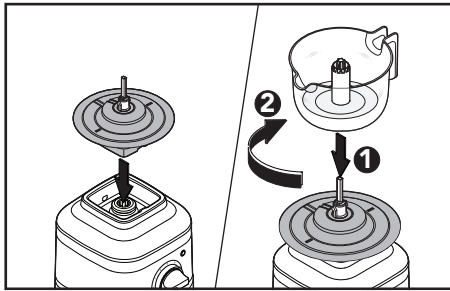
- Press (▶⊗) to stop. Always remove the Personal Jar or Small Batch Jar with Blade Assembly from the Base.



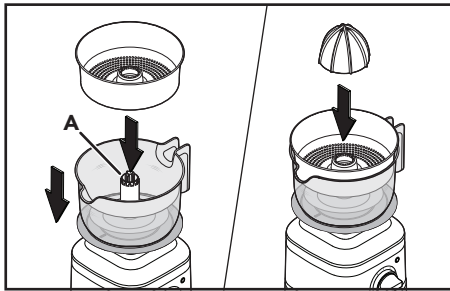
USING THE CITRUS PRESS

Before first use, clean all parts and accessories (see “Care and Cleaning” section).

1. Place the Gear Assembly on Base. Place the Juice Container on the Gear Assembly and twist clockwise to lock in place.

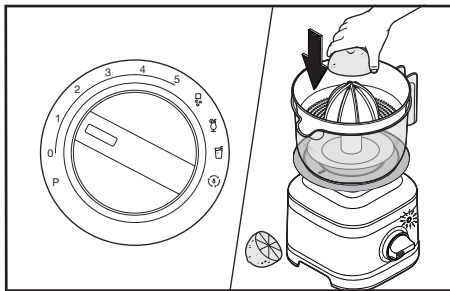


2. Place the Pulp Basket and then the Reamer into the Juice Container by aligning them with the Drive Shaft (A).

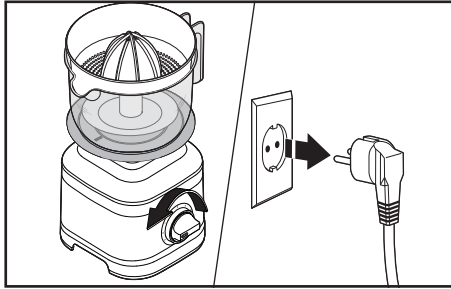


A. Drive Shaft

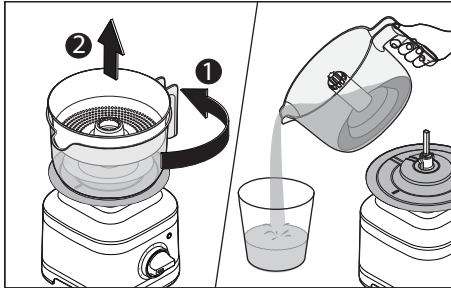
3. Turn from (O) to speed 1 or 2. Hold down the halved citrus fruit on the Reamer. Press (▶|⊙) to start.



4. Press (▶|⊗) button to stop. Turn the Control Dial to (O). Unplug the Blender.



5. Twist the Juice Container counterclockwise and lift it by using handle. Pour and enjoy!



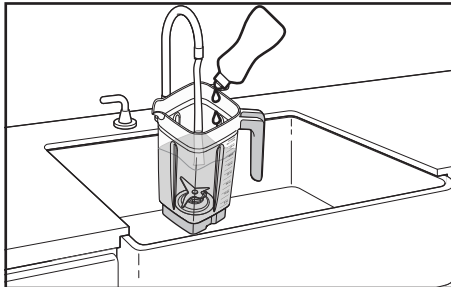
IMPORTANT: Allow the Blender to fully stop before removing the Reamer, Juice Container, or pouring out the juice.

CARE AND CLEANING

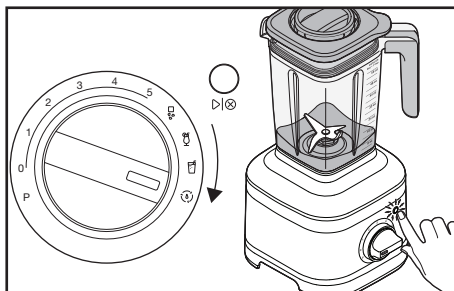
USING THE CLEAN FUNCTION

IMPORTANT: Allow the appliance to cool completely before putting on or taking off parts, and before cleaning the appliance.

1. Fill half of the Jar with warm water and add 1 or 2 drops of dish-washing liquid. Place the Jar on the Base. Secure the Lid and Lid Centre Cap.

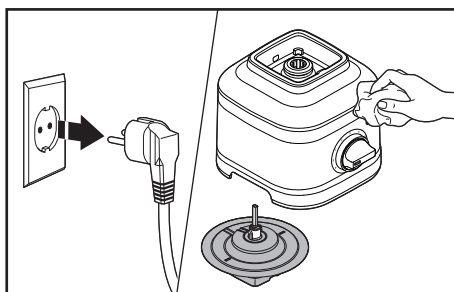


2. Turn from (O) to (Ⓞ). Press (▷|⊗) to start. When cycle ends, remove the Jar and empty contents and rinse with warm water and dry thoroughly.

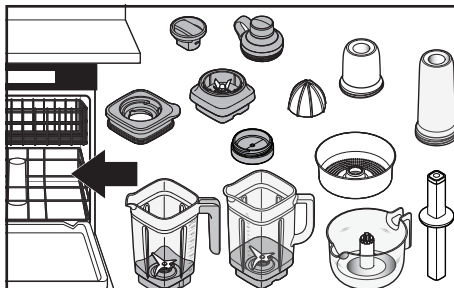


NOTE: Do not immerse the Blender Base or cord in water. Do not use abrasive cleansers or scouring pads to avoid scratching.

3. Unplug the Blender before cleaning. Wipe clean the Base, power cord and the Gear Assembly of the citrus press with a warm, damp cloth and dry with a soft cloth.



4. **Dishwasher-safe, top rack only:** Personal Jar, Small Batch Jar, Lids, Blade Assembly, Reamer, Juice Container, Pulp Basket and Lid Centre Cap, Tamper***. Blender Jar and Glass Jar can also be washed in the bottom rack.



***Available as an optional accessory.

TROUBLESHOOTING

WARNING

Electrical Shock Hazard



Plug into an earthed outlet.

Do not remove earth prong.

Do not use an adapter.

Do not use an extension cord.

Failure to follow these instructions can result in death, fire, or electrical shock.

| PROBLEM | SOLUTION |
|--|--|
| If Blender fails to start | Check to see if the Blender is securely plugged into an earthed electrical outlet. |
| | If you have a circuit breaker box, make sure the circuit is closed. |
| If Blender stops after 3 minutes | It's a part of the Blender operation to ensure lasting durability. Turn the Control Dial to (O) and repeat the process until desired consistency. |
| If Blender stops while blending | When overloaded or jammed, it will automatically shut off to prevent motor damage. Unplug the Blender. Remove the Jar and use a spatula to rearrange ingredients. |
| | Or, divide contents into smaller batches. For certain recipes, adding liquid in the Jar may also reduce the load. |
| If ingredients are stuck or not blending | Unplug the Blender. Remove the Jar from the Base, and use a spatula to rearrange ingredients in the Jar. |
| If Blender stops while blending with Personal Jar or Small Batch Jar | Unplug the Blender. Remove the Personal Jar or Small Batch Jar with the Blade Assembly from the Base. Shake it a little bit. Place it back on the Base, plug in the Blender and turn it back on to continue regular use. |
| If Blender stops while blending and the white LED ring flashes rapidly | An error is detected in the Blender. Contact an Authorised Service Centre for assistance. See the "Terms of KitchenAid Guarantee ("Guarantee")" section. |

| PROBLEM | SOLUTION |
|------------------------------------|---|
| If the white LED ring is off | After 10 minutes of no activity the Blender will go into Sleep mode. To wake up the Blender, press (▷ ⊗) button. |
| If the problem cannot be corrected | See the “Terms of KitchenAid Guarantee (“Guarantee”)” section. Do not return the Blender to the retailer. Retailers do not provide service. |

ELECTRICAL EQUIPMENT WASTE DISPOSAL

DISPOSAL OF PACKING MATERIAL

The packing material is recyclable and is marked with the recycle symbol ♻️. The various parts of the packing must therefore be disposed of responsibly and in full compliance with local authority regulations governing waste disposal.

RECYCLING THE PRODUCT

- This appliance is marked in compliance with law in the EU and UK covering, Waste Electrical and Electronic Equipment (WEEE).
- By ensuring this product is disposed of correctly, you will help prevent potential negative consequences for the environment and human health, which could otherwise be caused by inappropriate waste handling of this product.
- The symbol ♻️ on the product or on the accompanying documentation indicates that it should not be treated as domestic waste but must be taken to an appropriate collection centre for the recycling of electrical and electronic equipment.

For more detailed information about treatment, recovery and recycling of this product, please contact your local city office, your household waste disposal service or the shop where you purchased the product.

DECLARATION OF CONFORMITY

FOR UNITED KINGDOM

This appliance has been designed, constructed and distributed in compliance with the safety requirements of UK Legislation: Electrical Equipment (Safety) Regulations 2016, Electromagnetic Compatibility Regulations 2016. The Ecodesign for Energy-Related Products and Energy Information (Amendment) (EU Exit) Regulations 2019. The Restriction of the Use of Certain Hazardous Substances in Electrical and Electronic Equipment Regulations 2012.

FOR EUROPEAN UNION

This appliance has been designed, constructed, and distributed in compliance with the safety requirements of EC Directives: Low Voltage Directive 2014/35/EU, Electromagnetic Compatibility Directive 2014/30/EU, Ecodesign Directive 2009/125/EC, RoHS Directive 2011/65/EU and following amendments.

TERMS OF KITCHENAID GUARANTEE ("GUARANTEE")

Covering U.K. - Ireland - UAE

KitchenAid UK Limited Morley Way, Peterborough, Cambridgeshire PE2 9JB UK ("Guarantor") grants the end-customer, who is a consumer, a Guarantee pursuant to the following terms.

FOR U.K.:

The Guarantee applies in addition to and does not limit or affect the statutory warranty rights of the end-customer against the seller of the product. In summary, the Consumer Rights Act 2015 says products must be as described, fit for purpose and of satisfactory quality. During the expected lifespan of your product your legal rights entitle you to the following:

- Up to 30 days: if your product is faulty, then you can get an immediate refund.
- Up to six months: if your product can't be repaired or replaced, then you're entitled to a full refund, in most cases.
- Up to six years: if your product does not last a reasonable length of time you may be entitled to some money back.

These rights are subject to certain exceptions. For detailed information please visit the Citizens Advice website www.adviceguide.org.uk or call **03454 04 05 06**.

FOR IRELAND:

The Guarantee applies in addition to and does not limit or affect the statutory warranty rights of the end-customer against the seller of the product under the European Communities (Certain Aspects of the Sale of Consumer Goods and Associated Guarantees Regulations 2003 (S.I. No. 11/2003)) and other enactments governing the sale of consumer goods.

FOR UAE:

The Guarantee applies in addition to and does not limit or affect the statutory warranty rights of the end-customer against the seller of the product.

1. SCOPE AND TERMS OF THE GUARANTEE

- a) The Guarantor grants the Guarantee for the products mentioned under Section 1.b) which a consumer has purchased from a seller or a company of the KitchenAid-Group within the following countries: U.K., Ireland, or the United Arab Emirates (UAE).
- b) The Guarantee period depends on the purchased product and is as follows:

Five Year full guarantee from date of purchase.

- c) The Guarantee period commences on the date of purchase, i.e. the date on which a consumer purchased the product from a dealer or a company of the KitchenAid-Group.
- d) The Guarantee covers the defect-free nature of the product.
- e) The Guarantor shall provide the consumer with the following services under this Guarantee, at the choice of the Guarantor, if a defect occurs during the Guarantee period:
 - Repair of the defective product or product part, or
 - Replacement of the defective product or product part. If a product is no longer available, the Guarantor is entitled to exchange the product for a product of equal or higher value.
- f) If the consumer wishes to make a claim under the Guarantee, the consumer has to contact the country specific KitchenAid service centres or the Guarantor directly at KitchenAid UK Limited Morley Way, Peterborough, Cambridgeshire PE2 9JB UK;

Email-Address U.K.: CONSUMERCARE.UK@kitchenaid.eu

Email-Address IRELAND: CONSUMERCARE.IE@kitchenaid.eu

Toll Free Number U.K. & IRELAND: **00 800 381 040 26**

FOR UAE:

AL GHANDI ELECTRONICS.

POST BOX NO. 9098,

DUBAI, UNITED ARAB EMIRATES

Toll free number: +971 4 2570007

- g) The costs of repair, including spare parts, and any postage costs (if applicable) for the delivery of a defect-free product or product part shall be borne by the Guarantor. The Guarantor shall also bear the postage costs for returning the defective product or product part if the Guarantor or the country specific KitchenAid customer service centre requested the return of the defective product or product part. However, the consumer shall bear the costs of appropriate packaging for the return of the defective product or product part.
- h) To be able to make a claim under the Guarantee, the consumer must present the receipt or invoice of the purchase of the product.

2. LIMITATIONS OF THE GUARANTEE

- a) The Guarantee applies only to products used for private purposes and not for professional or commercial purposes.
- b) The Guarantee does not apply in the case of normal wear and tear, improper or abusive use, failure to follow the instructions for use, use of the product at the wrong electrical voltage, installation and operation in violation of the applicable electrical regulations, and use of force (e.g. blows).
- c) The Guarantee does not apply if the product has been modified or converted, e.g. conversions from 120 V products to 220-240 V products.
- d) The provision of Guarantee services does not extend the Guarantee period, nor does it initiate the commencement of a new Guarantee period. The Guarantee period for installed spare parts ends with the Guarantee period for the entire product.
- e) **FOR UAE ONLY:**

Further or other claims, in particular claims for damages, are excluded unless liability is mandatory by law.

After expiry of the Guarantee period or for products for which the Guarantee does not apply, the KitchenAid customer service centres are still available to the end-customer for questions and information.

Further information is also available on our website:

- For U.K. & Ireland www.kitchenaid.eu
- For UAE: www.KitchenAid-MEA.com

PRODUCT REGISTRATION

Register your new KitchenAid appliance now: www.kitchenaid.eu/register