



THANK YOU FOR BUYING A WHIRLPOOL PRODUCT
In order to receive a more complete assistance, please register your product on www.whirlpool.eu/register



Before using the appliance carefully read the Safety Instruction.

PRODUCT DESCRIPTION

FIRST TIME USE

AIR VENT (FOR THE SUCTION VERSIONS)

Connect the hood and discharge holes on the walls with a diameter equivalent to the air outlet (connection flange).
Using the tubes and discharge holes on walls with smaller dimensions will cause a diminution of the suction performance and a drastic increase in noise.
Any responsibility in the matter is therefore declined.
! Use a duct of the minimum indispensable length.
! Use a duct with as few elbows as possible (maximum elbow angle: 90°).
! Avoid drastic changes in the duct cross-section.
! The company declines any responsibility whenever these regulations are not respected.

FILTERING OR DUCTING?

! Your cooker hood is ready to be used in suction version.
To use the hood in filtering version the special ACCESSORY KIT must be installed.
Check if the ACCESSORY KIT is furnished or must be bought separately.
Note: If furnished, in certain cases, the additional activated carbon filtering

system may be installed on the hood. Information about the conversion of the hood from suction version to filtering version is present in the Manual "Safety Instructions & Installation".



DUCTING VERSION

In this case the fumes are conveyed outside of the building by means of a special pipe connected with the connection ring located on top of the hood.

Attention! The exhausting pipe is not supplied and must be purchased apart. Diameter of the exhausting pipe must be equal to that of the connection ring.

Attention! If the hood is supplied with active charcoal filter, then it must be removed.



FILTER VERSION

The aspirated air will be degreased and deodorised before being fed back into the room.

In order to use the hood in this version, you have to install a system of additional filtering based on activated charcoal.

CONTROL PANEL



T1



T2



T3



T4



T5



T6



T7

- T1.** Fan motor OFF / Decrease speed
- T2.** Fan motor ON / Increase speed
- T3.** "POWER BOOST" Function
- T4.** 6th sense function (AUTO mode) ON/OFF
- T5.** Operation "ZEN Mode"
- T6.** Grease/charcoal filter alarm/reset
- T7.** Main light ON / OFF

CAUTION! This hood has an automatic operation system (see below "T4. 6th sense function (AUTO mode) ON/OFF").

Calibration occurs automatically each time the hood is reconnected to the electrical network (e.g.: the first time it is installed after a blackout). It can also be performed manually (see paragraph "Sensor set up"). During calibration, which lasts for 5 minutes, T4 will flash and lights can be used.

T1. FAN MOTOR OFF / DECREASE SPEED

Press to decrease speed and switch the extraction motor OFF. Press and hold to directly switch the extraction motor OFF.

T2. FAN MOTOR ON / INCREASE SPEED

Press to switch the extraction motor ON and increase speed. Press and hold to set 3th speed directly.

T3. "POWER BOOST" FUNCTION

Press T3 to activate the "POWER BOOST 1" intensive extraction speed (time-controlled).

Please note: the hood will go back to running at the 3th speed, after five minutes.

With the extraction motor on, in "POWER BOOST1", press again T3 to activated the "POWER BOOST 2" additional intensive extraction speed (time-controlled).

Please note: the hood will go back to running at the 3th speed, after five minutes.

Please note: press again T3, during the five minutes, the hood will go back to running in "POWER BOOST 1"

T4. 6TH SENSE FUNCTION (AUTO MODE) ON/OFF

The hood set the extraction speed automatically if the sensor in the hood detects changing on ambient conditions.

Please note: to make sure this function is used correctly first **configure sensor** (see "Sensor set up" below).

Please note: if you change any other functions that control the speed, the "6th sense" function will switch off.

Sensor set up

This can be done when the hood is OFF. In normal ambient conditions press T4 for 5secs, T4 flashes for 5 mins to indicate hood is performing sensor calibration, then switches off to indicate the calibration has ended.

Setting cooktop: Press and hold T1 and T2 simultaneously. Both lit to indicate hood is ready to accept cooktop parameter calibration.

Press T1 to choose Gas hob (T1 starts to flash for 3 secs to indicate hood parameters are set for gas hob).

Press T2 to choose Induction hob (T2 starts to flash for 3 secs to indicate hood parameters are set for induction hob).

T5. OPERATION "ZEN MODE"

Press to activate or deactivate the "ZEN" extraction mode.

This function makes it possible to activate an extraction speed with the perfect balance between quietness and extraction efficiency.

T6. GREASE/CHARCOAL FILTER ALARM/RESET

At regular intervals, the hood signals the need to perform filter maintenance.

Please note: The indicators will only work when the hood is on.

T6 lit: Carry out maintenance on the grease filter.

T6 flashing: carry out maintenance of the charcoal filter.

Resetting the filter saturation indicators:

Please note: This must be done with the hood switched on.

Press and hold T6

Please note: T6 and hood switch off, to indicate alarm reset is done. The reset of the Grease Filter and Charcoal Filter is performed using the same key. If both filters alarms are active, the reset procedure will reset the counter one by one, with priority to the Charcoal.

Activating the carbon filter saturation indicator

Please note: This must be done with the extraction motor switched off.

This indicator is usually deactivated – press and hold **T3** and **T7** simultaneously to activate the function: Both will lightup to indicate activation.

To deactivate the function, press and hold the same buttons again: Both will flash briefly and then switch off to indicate deactivation.

T7. MAIN LIGHT ON/OFF

Press to switch the hob lights on or off.

TECHNICAL DATA

Height (cm)	Width (cm)	Depth (cm)	Ø of exhaust tube (cm)
62-114	59,8	45,5	15
62-114	89,8	45,5	15

CLEANING AND MAINTENANCE

CLEANING

- **Do not use steam-cleaning equipment.**
- **Disconnect the appliance from the mains.**

Important: do not use corrosive or abrasive detergents. If any such products unintentionally come into contact with the appliance, clean the appliance immediately with a damp cloth. Do not use alcohol.

- Clean the surfaces with a damp cloth. If it is very dirty, add a few drops of washing-up detergent to the water. Finish off with a dry cloth.

Important: do not use abrasive sponges or metallic scrapers or scourers. Over time, these can ruin the enamel surfaces.

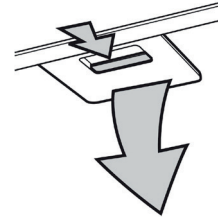
- Use detergents specifically designed for cleaning the appliance and follow the manufacturer's instructions.

Important: clean the filters at least once a month to remove oil and grease residue.

MAINTENANCE OF THE GREASE FILTERS

This must be cleaned once a month (or when the filter saturation indication system - if envisaged on the model in possession - indicates this necessity) using non aggressive detergents, either by hand or in the dishwasher, which must be set to a low temperature and a short cycle. When washed in a dishwasher, the grease filter may discolour slightly, but this does not affect its filtering capacity. Pull out the handle to remove the filter.

Once the filter has been washed and left to dry, proceed in reverse order to refit the filter.



ACTIVE CARBON FILTER (FOR MODELS WITH FILTERING INSTALLATION ONLY)

The carbon filter must be washed once a month in a dishwasher at the highest temperature, using a normal detergent for dishwashers. You are advised to wash the filter on its own.

After being washed, the filter must be dried in the oven at 100°C for 10 minutes in order to reactivate it.

Replace the filter every 3 years.

Assembling the carbon filter:

1. Remove the grease filter.
2. Remote the filter support frame by turning the knobs 90°.
3. Assemble the carbon filter in the support frame.

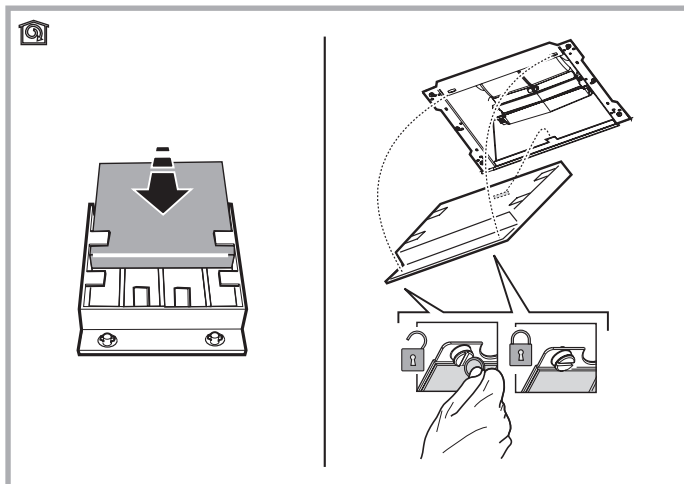
Follow the above steps in reverse order to replace the filter support frame and the grease filter.

REPLACING THE LAMPS

The hood is equipped with an LED lighting system.

LEDs ensure excellent illumination, have a service life up to 10 times longer than traditional bulbs, and offer up to 90% energy savings.

Note: For replacement LED, please contact the Technical After-sales Service Centre.



* Available only on certain models

TROUBLESHOOTING

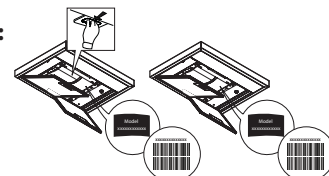
Problem	Solutions
The appliance does not work.	<ul style="list-style-type: none">• Check the mains voltage and whether the appliance is connected to the power supply;• Check that a speed has been selected;• Switch the appliance off and on again to see if the fault persists.
The hood is not extracting air sufficiently.	<ul style="list-style-type: none">• Check that the air extraction speed is set to the desired level;• Check that the filters are clean;• Check the air vents for any obstructions.
The hood has turned off during normal functioning.	<ul style="list-style-type: none">• Check that the power has not been disconnected;• Check that the omnipolar disconnection device has not tripped.

* Available only on certain models



You can download the Safety Instructions, User Manual, Product Fiche and Energy data by:

- Visiting our website docs.whirlpool.eu
- Using QR Code
- Alternatively, **contact our After-sales Service** (See phone number in the warranty booklet). When contacting our After-sales Service, please state the codes provided on your product's identification plate.



Whirlpool



400011310871