

**THANK YOU FOR BUYING A WHIRLPOOL PRODUCT.**

In order to receive a more complete assistance, please register your appliance on [www.whirlpool.eu/register](http://www.whirlpool.eu/register)



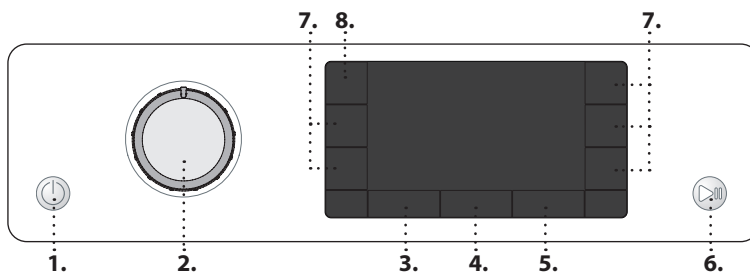
**Before using the appliance carefully read the Health and Safety guide.**



Before using the machine, it is imperative that the transport bolts are removed. For more detailed instructions on how to remove them, see the Installation Guide.

**CONTROL PANEL**

1. "ON/OFF" button
2. Programme selector
3. "Temperature" button
4. "Spin" button
5. "Start delay" button
6. "Start/Pause" button
7. Option buttons
8. "Key lock" button



**INDICATORS**  
Door can be opened

**Washing phase**  
Indicates washing phase of the cycle  
**Failure: Call Service**  
Refer to Troubleshooting section  
**Failure: Water filter clogged**  
Water cannot be drained; water filter might be blocked  
**Failure: Water tap closed**  
No or not sufficient inlet water. "Beep" sound every 5 seconds.  
*In the event of any failures, refer to the Troubleshooting section in USER MANUAL*

**PROGRAMME CHART**

Programme	Temperatures		Max. spin speed (rpm)	Max load (kg)	Duration (h : m)	Detergents and additives			Recommended detergent		Residual dampness % (*)	Energy consumption kWh	Total water lt	Laundry temperature °C
	Setting	Range				Prewash	Main wash	Softener	Powder	Liquid				
Mixed	40°C	☼ - 40°C	1000	10,0	**	-	●	○	-	✓	-	-	-	-
White (Whites)	60°C	☼ - 90°C	1400	10,0	2:40	●(90°)	●	○	✓	✓	54	1,900	100	55
Cotton	40°C	☼ - 60°C	1400	10,0	3:55	-	●	○	✓	✓	49	1,140	107	45
Eco 40-60	40 °C	40 °C	1351	10,0	3:59	-	●	○	✓	✓	53	0,730	58	30
			1351	5,0	3:00	-	●	○	✓	✓	53	0,420	48	27
			1351	2,5	2:30	-	●	○	✓	✓	53	0,190	35	23
Bed linen	60°C	☼ - 60°C	1400	10,0	**	-	●	○	✓	✓	-	-	-	-
Sport	40°C	☼ - 40°C	600	4,0	**	-	●	○	-	✓	-	-	-	-
Duvet (Duvets)	30°C	☼ - 30°C	1000	3,5	**	-	●	○	-	✓	-	-	-	-
Steam Refresh	-	-	-	2	**	-	-	-	-	-	-	-	-	-
Spin & Drain (Spin + Drain)	-	-	1400	10,0	**	-	-	-	-	-	-	-	-	-
Rinse & Spin (Rinse + Spin)	-	-	1400	10,0	**	-	-	○	-	-	-	-	-	-
Rapid 30'	30°C	☼ - 30°C	1200 (***)	4,5	0:30	-	●	○	-	✓	71	0,210	50	27
20°C	20°C	☼ - 20 °C	1400	10,0	1:50	-	●	○	-	✓	55	0,200	95	22
Silk	30°C	☼ - 30°C	600 (***)	1,0	**	-	●	○	-	✓	-	-	-	-
Wool	40°C	☼ - 40°C	800	2,0	**	-	●	○	-	✓	-	-	-	-
Delicates	30°C	☼ - 30°C	600 (***)	1,0	**	-	●	○	-	✓	-	-	-	-
Synthetics	40°C	☼ - 60°C	1200	4,5	2:55	-	●	○	✓	✓	35	0,830	80	43

● Dosing required ○ Dosing optional

This data may differ in your home due to changing conditions in inlet water temperature, water pressure etc. Approximate programme duration values refer to the default setting of the programmes, without options. The values given for programmes other than the Eco 40-60 programme are indicative only.  
**Eco 40-60** - Test wash cycle in compliance with EU Ecodesign regulation 2019/14. The most efficient programme in terms of energy and water consumption for washing normally soiled cotton laundry.  
**Note:** spin speed values shown on the display can slightly differs from the values stated in the table.

\* After programme end and spinning with maximum selectable spin speed, in default programme setting.  
\*\* The duration of the programme is shown on the display.  
\*\*\* The display will show the suggested spin speed as default value.

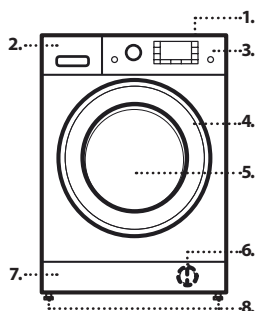
**6th Sense** - the sensor technology adapts water, energy and programme duration to your wash load.

**For all Test Institutes**

Long wash cycle for cottons: set wash cycle **Cotton** with a temperature of 40°C.  
Synthetic program along: set wash cycle **Synthetics** with a temperature of 40°C.

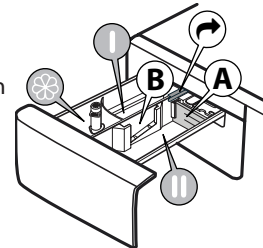
**PRODUCT DESCRIPTION**

1. Worktop
2. Detergent dispenser
3. Control panel
4. Door handle
5. Door
6. Water filter - behind plinth
7. Plinth (removable)
8. Adjustable feet (4)



**DETERGENT DISPENSER**

**Main wash compartment** Detergent for the main wash, stain remover or water softener. For a liquid detergent it is recommended to use removable plastic partition **A** (supplied) for a proper dosage. If powder detergent is used, place the partition into slot **B**.  
**Prewash compartment** Detergent for the prewash.  
**Softener compartment** Fabric softener. Liquid starch.  
**Pour in softener or starch solution only up to the "max" mark.**  
**Release button** Press to remove tray for cleaning.



## PROGRAMMES

For choosing the appropriate programme for your kind of laundry, always respect the instructions on the care labels of the laundry. The value given in the tub symbol is the maximum temperature possible for washing the garment.



### Mixed

For washing lightly to normally soiled resilient garments in cotton, linen, synthetic fibres and mixed fibres.

### White (Whites)

For washing normally to heavily soiled towels, underwear, table and bed linen, etc in resilient cotton and linen. Only when the temperature is selected at 90°C the cycle is provided with a prewash phase before main washing phase. In this case it is recommended to add detergent both, in the prewash and main wash section.

### Cotton

Normally to heavily soiled and robust cottons .

### Eco 40-60

For washing normally soiled cotton garments declared to be washable at 40 °C or 60 °C, together in the same cycle. This is the standard cotton programme and the most efficient in terms of water and energy consumption.

### Bed linen

Use this programme to wash bed linen and towels in one single cycle. It optimises softener performance and helps you save time and energy. We recommend to use powder detergent.

### Sport

For washing lightly soiled sports clothing (tracksuits, shorts, etc.). For best results, we recommend not exceeding the maximum load indicated in the "PROGRAMME CHART". We recommend using liquid detergent , and adding the amount suitable for half-load.

### Duvet (Duvets)

Designed for washing eiderdown padded items such as double or single duvets, cushions and anoraks. It is recommended to load such padded items in the drum with the edges folded inwards and not to exceed ¾ of the drum's volume. For optimal washing, we recommend using a liquid detergent.

### Steam Refresh

This programme refreshes garments by removing bad odours and relaxing the fibres (2 kg, roughly 3 items). Insert dry items only (that are not dirty) and select programme "Steam Refresh". Garments will be a little damp at the end of the cycle and can be worn after a few minutes. The "Steam Refresh" programme makes ironing easier.

! Not recommended for wool or silk garments.

! Do not add softeners or detergents.

### Spin & Drain (Spin + Drain)

Spins the load then empties the water. For resilient garments. If you exclude the spin cycle, the machine will drain only

### Rinse & Spin (Rinse + Spin)

Rinses and the spins. For resilient garments.

### Rapid 30'

For washing lightly soiled garments quickly. This cycle lasts only 30 minutes, saving time and energy.

### 20°C

For washing lightly soiled cotton garments, at a temperature of 20 °C.

### Silk

Use this cycle to wash all silk garments. We recommend the use of special detergent which has been designed to wash delicate clothes.

### Wool

All wool garments can be washed using programme, "Wool" even those carrying the "hand-wash only" label. For best results, use special detergents and **do not exceed max kg declaration of laundry**.

### Delicates

For washing particularly delicate garments. Preferably turn garments inside out before washing.

### Synthetics

For washing soiled garments made from synthetic fibres (such as polyester, polyacrylic, viscose, etc.) or cotton/synthetic blends.

## FIRST TIME USE

The first time the machine is switched on, you will be asked to select the language and the display will automatically show the language selection menu.

To select the desired language press the "Temperature" button or "Start delay" button; to confirm the selection press the "Spin" button.

To change the language switch off the washing machine and press buttons "Key lock", "Intensive rinse" and "FreshCare+" simultaneously until an alarm is heard: the language-selection menu will be displayed again.

To remove any residues from the manufacturing process. Select the "Cotton" programme at a temperature of 60°C. Add a small amount of

heavy duty detergent to the main wash compartment of the detergent dispenser (maximum 1/3 of the quantity recommended by the detergent manufacturer for lightly soiled laundry). Start the programme **without adding any laundry**.

## DAILY USE

Prepare your laundry according to the recommendations in the "HINTS AND TIPS" section. Load the laundry, close the door, open the water tap and press the "ON/OFF" button to switch the washing machine on, the "Start/Pause" button flashes. Turn the programme selector to the desired programme and select any option if needed. The temperature and spin speed shown on the display can be changed by pressing the "Temperature" button or the "Spin" button. Pull out the detergent dispenser and add the detergent (and additives/softener) now. Observe the dosing recommendations on the detergent pack.

### STARTING CYCLE

Close the detergent dispenser and press the "Start/Pause" button. The machine will lock the door ( symbol off) and the drum will start to rotate; the door will be unlocked ( symbol on) and then locked again ( symbol off) as preparation phase of each washing cycle. The "Clicking" noise is part of the door locking mechanism. Water will enter the drum and start the washing phase once the door is locked.

## PAUSE A RUNNING PROGRAMME

To pause the wash cycle, press the button "Start/Pause" again; the indicator light will flash. If the symbol is illuminated, the door may be opened. To start the wash cycle from the point at which it was interrupted, press the button again.

## OPEN THE DOOR, IF REQUIRED

Before starting and after end of a programme, the "Door open" symbol lights to show the door can be opened. As long as a wash programme is running, the door remains locked. To open the door while a programme is in progress, press the "Start/Pause" button. Provided the water level and/or temperature is/are not too high, the "door open" indicator lights up and you can open the door. For example to add/ remove laundry. Press the "Start/Pause" button again to continue the programme.

## PROGRAMME END

The "Door open" indicator lights up, and the display shows "Cycle end". To switch off the washing machine after programme end press the "ON/OFF" button, the lights go off. If you do not press "ON/OFF" button, the washing machine will switch off automatically after about a 10 minutes. Close the water tap. Open the door and unload the machine. Leave the door ajar to allow the drum to dry.

## OPTIONS

! If the selected function is incompatible with the set programme, the incompatibility will be signalled by a buzzer (3 beeps) and the wording "No Selection" will appear on the display.

! If the selected function is incompatible with another previously set function, the wording "No Selection" will appear on the display and the function will not be enabled.

### Clean+

Clean+ is an option working on 3 different levels (Intensive, Daily and Fast) that are specially designed to set the right washing action, depending on your cleaning needs:

**Intensive:** this option is designed for high levels of dirtiness, removing most stubborn stains.

**Daily:** this option is designed to remove everyday stains.

**Fast:** this option is designed to remove lightly soiled stains.

### Intensive rinse

By selecting this option, the efficiency of the rinse is increased and optimal detergent removal is guaranteed. It is particularly useful for sensitive skin. Press the button once, two or three times to select an additional 1, 2 or 3 rinses after the standard cycle rinse and remove all traces of detergent. Press the button again to go back to the "Normal rinse" rinse type.

### Delay Timer


To set the selected programme to start at a later time, press the button to set the desired delay time. "Waiting" or "Starts in" is indicated on the display when this option is enabled. To cancel the delayed start, press the button again until the value, "--:--" is shown on the display.



This option enhances washing performance by generating steam to inhibit the proliferation of the main bad odour sources inside the machine. After steam phase, the washing machine will perform gentle tumbling through slow rotations of the drum. FreshCare+ option starts after the cycle ends for a maximum duration of 6h and you can interrupt at any time by pressing any button on control panel or turning the knob.

(\*) Wait around 5' before open the door.

## Steam Hygiene


This option enhances washing performance by generating steam during the wash cycle that eliminates any bacteria from fibres while treating them at the same time. Place the laundry in the drum, choose a compatible programme and select option “”.

! The steam generated during washing machine operation may cause the porthole door to become hazy.


## Easy Iron

By selecting this function, the wash and the spin cycles will be modified in order to reduce the formation of creases.



## Temperature

Every programme has a predefined temperature. If you want to change the temperature, press the “Temperature”  button. The value appears on the display.

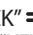
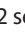
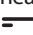
## Spin

Every programme has a predefined spin speed. If you want to change the spin speed, press the “Spin”  button. The value appears on the display.

## Demo mode



To deactivate this function, switch the washing machine OFF. Then press and hold “Start/Pause”  button, within 5 seconds press also “ON/OFF”  button and hold both buttons for 2 seconds.

## KEY LOCK

To lock the control panel, press and hold the “KEY LOCK”  button for approximately 3 seconds. When the display visualises “KEY LOCK ON” the control panel is locked (with the exception of the ON/OFF  button). This prevents unintentional changes to programmes, especially with children near the machine. To unlock the control panel, press and hold the “KEY LOCK”  button for approximately 3 seconds.

## BLEACHING

If you wish to bleach the laundry, load the washing machine and set the “Rinse & Spin” programme.

Start the machine and wait for it to complete the first water filling cycle (roughly 2 minutes). Put the machine in pause mode by pressing the “Start/Pause” button , open the detergent drawer and pour the bleach (observe the recommended doses indicated on the package) into the main wash compartment where the partition was previously mounted. Restart the cycle by pressing the “Start/Pause” button .

If desired, it is possible to add fabric softener into the appropriate compartment of the detergent drawer.

## HINTS AND TIPS

### Sort your laundry according to

Type of fabric/care label (cotton, mixed fibres, synthetics, wool, handwash items). Colour (separate coloured and white items, wash new coloured items separately). Delicates (wash small items – like nylon stockings – and items with hooks – like bras – in a cloth bag or pillow case with zip).

### Empty all pockets

Objects like coins or lighters can damage your laundry as well as the drum.

### Follow the dosage recommendation / additives

It optimizes the cleaning result, it avoids irritating residues of surplus detergent in your laundry and it saves money by avoiding waste of surplus detergent

### Use low temperature and longer duration

The most efficient programmes in terms of energy consumption are generally those that perform at lower temperatures and longer duration. **Observe the load sizes**

Load your washing machine up to the capacity indicated in the “PROGRAMME CHART” table to save water and energy.

### Noise and remaining moisture content

They are influenced by the spinning speed: the higher the spinning speed in the spinning phase, the higher the noise and the lower the remaining moisture content.

## DESCALE AND CLEAN PROCEDURE

A message on the display will regularly (roughly every 50 cycles) advise the user to run an automatic cleaning cycle to clean the washing machine and combat limescale build-up and bad odours.

For optimal maintenance we suggest using WPRO Limescale and grease remover, according to the instructions shown on the package. The product can be purchased by contacting the technical assistance service or through the website [www.whirlpool.eu](http://www.whirlpool.eu).

Whirlpool declines all liability for any damages to the appliance caused by the use of other cleaning products for washing machines available on the market.

## CLEANING & MAINTENANCE

*For any cleaning and maintenance, switch off and unplug the washing machine. Do not use flammable fluids to clean the washing machine.*

*Clean and maintain your washing machine periodically (at least 4 times per year).*

### Cleaning the outside of the washing machine

Use a soft damp cloth to clean the outer parts of the washing machine. Do not use glass or general purpose cleaners, scouring powder or similar to clean the control panel – these substances might damage the printing.

### Checking the water supply hose

Check the inlet hose regularly for brittleness and cracks. If damaged, replace it by a new hose available through our After-Sales Service or your specialist dealer. Depending on the hose type: If the inlet hose has a transparent coating, periodically check if the colour intensifies locally. If yes, the hose may have a leak and should be replaced

### Cleaning the water filter / draining residual water

*If you used a hot wash programme, wait until the water has cooled down before draining any water. Clean the water filter regularly, to avoid that the water cannot drain after the wash due to obstruction of the filter. If the water cannot drain, the display indicates that the water filter may be clogged.*

Remove the plinth by using the screwdriver: push downwards one side of the plinth with your hand, then push the screwdriver into the gap between plinth and front panel and pry open the plinth. Place a broad, flat container beneath the water filter, to collect the drain water. Slowly turn the filter counterclockwise until water flows out. Let the water flow out, without removing the filter. When the container is full, close the water filter by turning it in clockwise. Empty the container. Repeat this procedure until all the water has drained. Lay a cotton cloth beneath the water filter, which can absorb a small amount of rest water. Then remove the water filter by turning it out anti clockwise. Clean the water filter: remove residues in the filter and clean it under running water. Insert the water filter and reinstall the plinth: Reinsert the water filter again by turning it in clockwise direction. Make sure to turn it in as far as it goes; the filter handle must be in vertical position. To test water tightness of the water filter, you can pour about 1 liter of water into the detergent dispenser. Then reinstall the plinth.

## ACCESSORIES

*Contact our After-Sales Service to check if the following accessories are available for your washing machine model.*

### Stacking kit shelf

By which your dryer can be fixed on top of your washing machine to save space and to facilitate loading and unloading your dryer in the higher position.



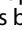

## TRANSPORT AND HANDLING

*Never lift the washing machine by holding it at the worktop.*

Pull out the mains plug, and close the water tap. Make sure that door and detergent dispenser are properly closed. Disconnect the inlet hose from the water tap, and remove the drain hose from your draining point. Remove all rest water from the hoses, and fix them so that they cannot get damaged during transport. Refit the transport bolts. Follow the instructions for removing the transport bolts in the INSTALLATION GUIDE in reverse order.

## TROUBLESHOOTING

The washing machine may sometimes not work properly for certain reasons. Before calling the Support Centre, it is recommended to check to see if the problem can be easily resolved using the following list.

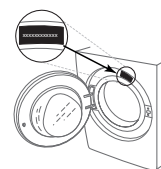
Anomalies:	Possible causes / Solution:
The washing machine does not turn on.	<ul style="list-style-type: none"> <li>• The plug is not inserted into the electrical outlet, or not enough to make contact.</li> <li>• There has been a power failure.</li> </ul>
The wash cycle does not start.	<ul style="list-style-type: none"> <li>• The door is not fully closed.</li> <li>• The ON/OFF  button has not been pressed.</li> <li>• The START/PAUSE  button has not been pressed.</li> <li>• The water tap is not open.</li> <li>• A "start delay"  has been set.</li> </ul>
The washing machine does not fill with water (the message "NO WATER", Turn tap on" is shown on the display). "Beep" sound every 5 seconds.	<ul style="list-style-type: none"> <li>• The water intake hose is not connected to the tap.</li> <li>• The hose is bent.</li> <li>• The water tap is not open.</li> <li>• The mains water supply has been shut off.</li> <li>• There is not enough pressure.</li> <li>• The START/PAUSE  button has not been pressed.</li> </ul>
The washing machine loads and drains water continuously.	<ul style="list-style-type: none"> <li>• The drain hose has not been installed at 65 to 100 cm from the ground.</li> <li>• The end of the drain hose is immersed in water.</li> <li>• The drain connector on the wall does not have an air vent.</li> </ul> <p>If the problem persists after having performed these checks, close the water tap, shut off the washing machine, and call the Support Centre. If the dwelling is located on one of the uppermost floors of a building, a siphon effect can sometimes occur, thus causing the washing machine to load and drain water continuously. Special anti-siphon valves are available on the market to prevent these types of problems.</p>
The washing machine does not drain or does not spin.	<ul style="list-style-type: none"> <li>• The programme does not include the draining function: with certain programmes it must be activated manually.</li> <li>• The drain hose is bent.</li> <li>• The drain line is obstructed.</li> </ul>
The washing machine vibrates excessively during the spin cycle.	<ul style="list-style-type: none"> <li>• At the time of installation, the drum was not properly unlocked.</li> <li>• The washing machine is not level.</li> <li>• The washing machine is squeezed between furniture and the wall.</li> </ul>
The washing machine leaks water.	<ul style="list-style-type: none"> <li>• The water intake hose has not been tightened properly.</li> <li>• The detergent dispenser is clogged.</li> <li>• The drain hose has not been properly fastened.</li> </ul>
The machine is locked and the display flashes, indicating an error code (e.g. F-01, F-..).	<ul style="list-style-type: none"> <li>• Shut off the machine, disconnect the plug from the outlet, and wait about 1 minute before turning it back on.</li> <li>• If the problem persists, call the Support Centre.</li> </ul>
Too much foam is formed.	<ul style="list-style-type: none"> <li>• The detergent is not compatible with the washing machine (it must bear the wording "for washing machines", "for hand washing and washing machines", or something similar).</li> <li>• The dosage was excessive.</li> </ul>
Door is locked, with or without failure indication, and the programme does not run.	<ul style="list-style-type: none"> <li>• Door is locked in case of power breakdown. Programme will continue automatically as soon as the mains is available again.</li> <li>• Washing machine is in a standstill. Programme will continue automatically after the origin of the standstill does not persist anymore.</li> </ul>

### Regulatory documentation, standard documentation, ordering spare parts and other product information can be found:

- Using the QR code in your appliance
- By visiting our website [docs.whirlpool.eu/docs](https://docs.whirlpool.eu/docs) and [parts-selfservice.whirlpool.com](https://parts-selfservice.whirlpool.com)
- Alternatively, **contact our After-sales Service** (See phone number in the warranty booklet). When contacting our After-sales Service, please state the codes provided on your product's identification plate.

For User's Repair & Maintenance Information visit [www.whirlpool.eu](https://www.whirlpool.eu)

The model information can be retrieved using the QR-Code reported in the energy label. The label also includes the model identifier that can be used to consult the portal of the registry at <https://eprel.ec.europa.eu>



# CLEANING & MAINTENANCE

**For any cleaning and maintenance, switch off and unplug the washing machine.  
Do not use flammable fluids to clean the washing machine.**

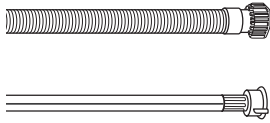
## CLEANING THE OUTSIDE OF THE WASHING MACHINE

Use a soft damp cloth to clean the outer parts of the washing machine.

Do not use glass or general purpose cleaners, scouring powder or similar to clean the control panel – these substances might damage the printing.

## CHECKING THE WATER SUPPLY HOSE

Check the inlet hose regularly for brittleness and cracks. If damaged, replace it by a new hose available through our After-Sales Service or your specialist dealer. Depending on the hose type:



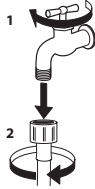
If the inlet hose has a transparent coating, periodically check if the colour intensifies locally. If yes, the hose may have a leak and should be replaced.



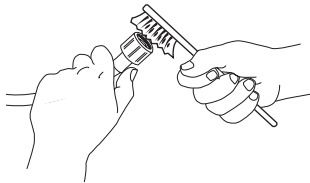
For water stop hoses: check the small safety valve inspection window (see arrow). If it is red, the water stop function was triggered, and the hose must be replaced by a new one. For unscrewing this hose, press the release button (if available) while unscrewing the hose.

## CLEANING THE MESH FILTERS IN THE WATER SUPPLY HOSE

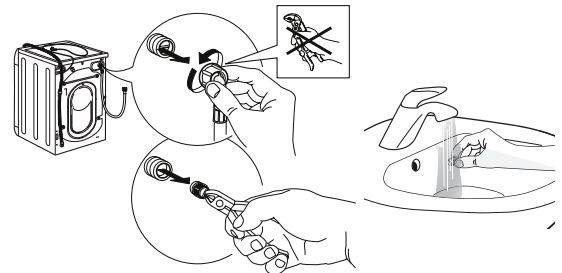
1. Close water tap and unscrew the inlet hose.



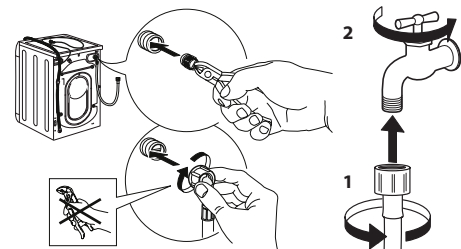
2. Clean the mesh filter at the hose's end carefully with a fine brush.



3. Now unscrew the inlet hose on the back of the washing machine by hand. Pull out the mesh filter from the valve on the back of the washing machine with pliers and carefully clean it.



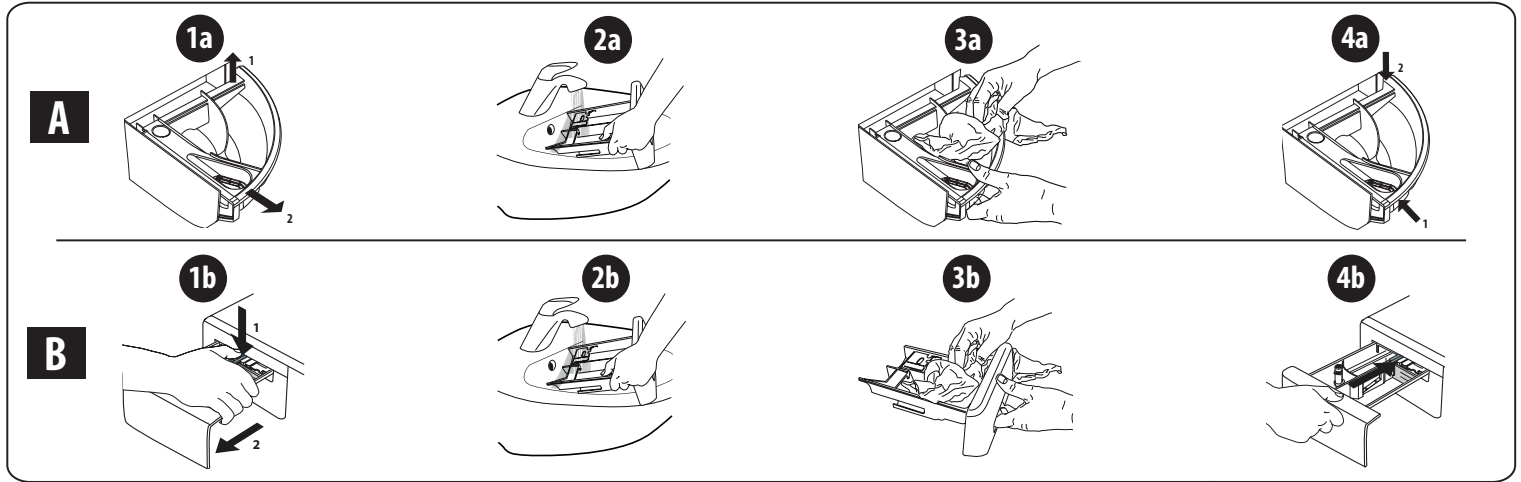
4. Insert the mesh filter again. Connect the inlet hose to water tap and washing machine again. Do not use a tool to connect the inlet hose. Open the water tap and check that all connections are tight.



## CLEANING THE DETERGENT DISPENSER

Remove the dispenser by raising it and pulling it out (see figure).

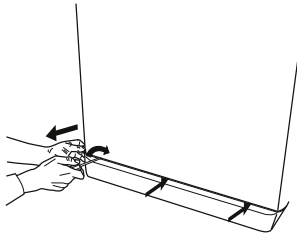
Wash it under running water; this operation should be repeated frequently.



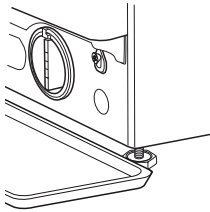
## CLEANING THE WATER FILTER / DRAINING RESIDUAL WATER

**Switch off and unplug the washing machine before cleaning the water filter or draining residual water. If you used a hot wash programme, wait until the water has cooled down before draining any water. Clean the water filter regularly every three months to prevent it from clogging and prevent the water from draining properly. If the water cannot drain, the display indicates that the water filter may be clogged.**

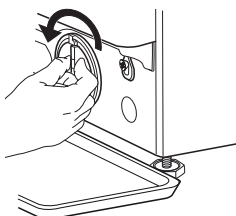
1. Remove the kick panel: Using a screwdriver, do that which is shown in the following figure.



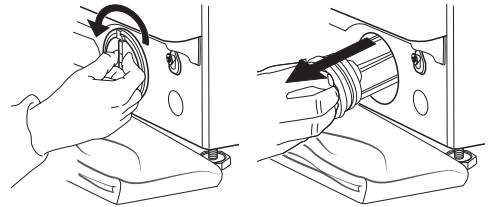
2. Container for the drained water: Place a low and wide container under the water filter in order to collect the residual water.



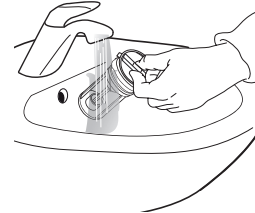
3. Drain the water: Slowly turn the filter counter-clockwise until all the water has come out. Allow the water to flow out without removing the filter. Once the container is full, close the water filter by turning it clockwise. Empty the container. Repeat the procedure until all the water has been drained.



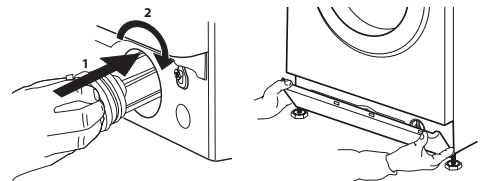
4. Remove filter: Lay a cotton cloth beneath the water filter, which can absorb a small amount of rest water. Then remove the water filter by turning it out anticlockwise.



5. Clean the water filter: remove residues in the filter and clean it under running water.



6. Insert the water filter and reinstall the plinth: Reinsert the water filter again by turning it in clockwise direction. Make sure to turn it in as far as it goes; the filter handle must be in vertical position. To test water tightness of the water filter, you can pour about 1 liter of water into the detergent dispenser. Then reinstall the plinth.



# TRANSPORT AND HANDLING

**Never lift the washing machine by holding it at the worktop.**

1. Pull out the mains plug, and close the water tap.
2. Make sure that door and detergent dispenser are properly closed.
3. Disconnect the inlet hose from the water tap, and remove the drain hose from your draining point. Remove all rest water from the hoses, and fix them so that they cannot get damaged during transport.
4. Refit the transport bolts. Follow the instructions for removing the transport bolts in the "Installation Guide" in reverse order.

**Important:** Do not transport the washing machine without having fixed the transport bolts.

## AFTER-SALES SERVICE

### BEFORE CALLING THE AFTER-SALES SERVICE

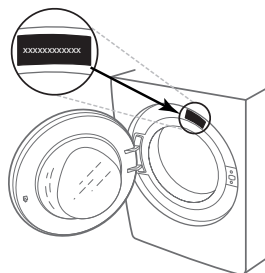
1. See if you can solve the problem by yourself with the help of the suggestions given in the **TROUBLESHOOTING**

### IF AFTER THE ABOVE CHECKS THE FAULT STILL OCCURS, GET IN TOUCH WITH THE NEAREST AFTER-SALES SERVICE

To receive assistance, call the number shown on the warranty booklet.

When contacting our Client After sales service, always specify:

- a brief description of the fault;
- the type and exact model of the appliance;



2. Switch the appliance off and back on again to see if the fault persists.

- the service number (number after the word Service on the rating plate).

**SERVICE** 0000 000 00000



- your full address;
- your telephone number.

If any repairs are required, please contact an authorised after-sales service (to guarantee that original spare parts will be used and repairs carried out correctly).