

# **KitchenAid**

## **FOOD CHOPPER 5KFC0516 OWNER'S MANUAL**

<b>EN</b>	<b>Owner's Manual</b>	<b>2</b>
<b>DE</b>	<b>Bedienungsanleitung</b>	<b>11</b>
<b>FR</b>	<b>Le manuel d'utilisation</b>	<b>21</b>
<b>IT</b>	<b>Manuale del proprietario</b>	<b>32</b>
<b>NL</b>	<b>Gebruikershandleiding</b>	<b>40</b>
<b>ES</b>	<b>El manual del propietario</b>	<b>48</b>
<b>PT</b>	<b>Manual do proprietário</b>	<b>56</b>
<b>EL</b>	<b>Εγχειρίδιο Κατοχού</b>	<b>65</b>
<b>SV</b>	<b>Användarhandbok</b>	<b>74</b>
<b>NO</b>	<b>Brukerhåndbok</b>	<b>82</b>
<b>FI</b>	<b>Omistajan Opas</b>	<b>90</b>
<b>DA</b>	<b>Brugervejledning</b>	<b>98</b>
<b>IS</b>	<b>Notandahandbók</b>	<b>106</b>
<b>PL</b>	<b>Instrukcja Obsługi</b>	<b>114</b>
<b>CS</b>	<b>Uživatelská Příručka</b>	<b>123</b>
<b>TR</b>	<b>Kullanıcı Kilavuzu</b>	<b>131</b>
<b>UA</b>	<b>Посібник з експлуатації</b>	<b>139</b>
<b>AR</b>	<b>دليل المالك</b>	<b>1</b>

# PRODUCT SAFETY

## Your safety and the safety of others are very important.

We have provided many important safety messages in this manual and on your appliance. Always read and obey all safety messages.



This is the safety alert symbol.

This symbol alerts you to potential hazards that can kill or hurt you and others.

All safety messages will follow the safety alert symbol and either the word "DANGER" or "WARNING." These words mean:

 **DANGER**

**You can be killed or seriously injured if you don't immediately follow instructions.**

 **WARNING**

**You can be killed or seriously injured if you don't follow instructions.**

All safety messages will tell you what the potential hazard is, tell you how to reduce the chance of injury, and tell you what can happen if the instructions are not followed.

## IMPORTANT SAFEGUARDS

**When using electrical appliances, basic safety precautions should always be followed, including the following:**

1. Read all instructions. Misuse of appliance may result in personal injury.
2. To protect against risk of electrical shock, do not put appliance in water or other liquid.
3. This appliance is not intended for use by persons (including children) with reduced physical, sensory, or mental capabilities, or lack of experience or knowledge, unless they have been given supervision or instruction concerning use of the appliance by a person responsible for their safety.
4. European Union Only: This appliance shall not be used by children. Keep the appliance and its cord out of reach of children.

## PRODUCT SAFETY (CONTINUED)

5. European Union Only: Appliances can be used by persons with reduced physical, sensory or mental capabilities or lack of experience and knowledge if they have been given supervision or instruction concerning use of the appliance in a safe way and understand the hazards involved. Children shall not play with the appliance.
6. Children should be supervised to insure they do not play with the appliance.
7. Turn the appliance off, then unplug from outlet when not in use, before assembling or disassembling parts, and before cleaning. To unplug, grasp the plug and pull from the outlet. Never pull from the Power Cord.
8. Avoid contacting moving parts.
9. Never leave the appliance unattended while it is in operation.
10. Do not operate any appliance with a damaged cord or plug, or after the appliance malfunctions, or is dropped or damaged in any manner. Return appliance to the nearest Authorised Service Facility for examination, repair, or electrical or mechanical adjustment.
11. The use of attachments/accessories not recommended or sold by KitchenAid may cause fire, electrical shock, or injury.
12. Do not use the appliance outdoors.
13. Do not let cord hang over edge of table or counter.
14. Keep hands and other utensils away from the cutting blade while chopping food to reduce the risk of severe injury to person or damage to the unit. A scraper may be used but must be used only when the unit is not running.
15. If the supply cord is damaged, it must be replaced by KitchenAid, its service agent or similarly qualified persons in order to avoid a hazard.
16. Blades are sharp. Care should be taken when handling the sharp cutting blades, emptying the bowl and during cleaning.
17. To reduce the risk of injury, never place cutting blade on base without first putting bowl properly in place.
18. Be certain cover is securely locked in place before operating the Food Chopper.
19. Do not attempt to defeat the cover interlock mechanism.

## PRODUCT SAFETY (CONTINUED)

20. Allow the appliance to cool completely before putting on or taking off parts, and before cleaning the appliance.
21. Refer to the “Care and Cleaning” section for instructions on cleaning the surfaces in contact with food.
22. This appliance is intended to be used in household and similar applications such as:
  - staff kitchen areas in shops, offices and other working environments;
  - farmhouses;
  - by clients in hotels, motels and other residential type environments;
  - bed and breakfast type environments.
23. Be careful if hot liquid is poured into the Food Chopper as it can be ejected out of the appliance due to a sudden steaming.

## SAVE THESE INSTRUCTIONS

For complete details on product information, instructions and videos, including Guarantee information, visit [www.KitchenAid.co.uk](http://www.KitchenAid.co.uk) or [www.KitchenAid.eu](http://www.KitchenAid.eu). This may save you the cost of a service call. To receive a free printed copy of the information online, call **00 800 381 040 26**.

## ELECTRICAL REQUIREMENTS

---

**Volts:** 220-240 V

**Frequency:** 50-60 Hz

**NOTE:** If the plug does not fit in the outlet, contact a qualified electrician. Do not modify the plug in any way.

Do not use an extension cord. If the power supply cord is too short, have a qualified electrician or service technician install an outlet near the appliance.

A short power supply cord (or detachable power supply cord) should be used to reduce the risk resulting from becoming entangled in or tripping over a longer cord.

# WHISKING ACCESSORY RECOMMENDATIONS CHART

The Whisking Accessory can be used to incorporate air into foods such as eggs, egg whites, heavy cream, mayonnaise, etc. Use the Drizzle Basin and Pour Spout to easily make mayonnaise or dressings.

SUGGESTED FOOD	AMOUNT	PROCESSING TIME	SETTING
Eggs and Egg Whites	Up to 420 mL (1.5 cups)	70 seconds	Speed 1
Heavy Cream	Up to 240 mL (1 cup)	30 seconds	Speed 2
Emulsions (Mayonnaise, Aioli, Salad Dressing)	Up to 350 mL (1.5 cups)	70 seconds	

# MULTIPURPOSE BLADE RECOMMENDATIONS CHART

Use the Multipurpose Blade to chop raw fruits, vegetables, or nuts and to mince parsley, chives, or garlic for easy preparation in your favourite recipes. Purée cooked fruit or vegetables to make baby food, or to use as bases for soups or sauces. You can also make bread crumbs or grind raw meat.

**NOTE:** For best results, larger food items should be cut to approximately 2.5 cm cubes before processing. This step also allows processing of more food at a single time.

**IMPORTANT:** Do not process coffee beans or hard spices such as nutmeg, which may damage the Food Chopper.

SUGGESTED FOOD	AMOUNT	PROCESSING TIME	SETTING
Raw Fruits and Vegetables	Up to 350 g (3 cups)	45 seconds	Speed 2
Cooked Fruits and Vegetables	Up to 500 g (2.5 cups)	30 seconds	
Meat	Up to 217 g (0.5 pounds) at one time		
Herbs and Spices	Up to 250 g (4 cups)	25 seconds	
Bread, Cookies, or Crackers	Up to 400 g (4 cups)	20 seconds	
Nuts	Up to 400 g (2.5 cups)	30 seconds	

**TIP:** For better consistency, or to achieve coarsely chopped results, use the Pulse operation.

# PRODUCT ASSEMBLY

## PREPARING THE FOOD CHOPPER FOR USE

---

### Before first use

Before using the Food Chopper for the first time, wash the Work Bowl, Lid, Whisk, and Blade in hot, soapy water. Work Bowl, Lid, and blade may also be washed in the top rack of a dishwasher.

For convenient storage, always reassemble the Food Chopper after cleaning.

## ASSEMBLING AND RUNNING THE FOOD CHOPPER

---

**IMPORTANT:** Be sure the Food Chopper is unplugged before assembling.

1. Start with the Work Bowl Handle facing front on the base. Rotate the handle 90° counterclockwise to lock into place. When assembled properly, the handle will face the right side.
2. Fit Drive Adapter over the shaft in the centre of the Work Bowl, then rotate and lower the Drive Adapter until it rests at the bottom of the Work Bowl.
3. If using the blade, fit the blade over the Drive Adapter, then rotate and lower the blade until it rests at the bottom of the Work Bowl. If using the whisk, see “Whisking Accessory Usage” section.

**NOTE:** Do not try to install more than one accessory at a time. The Food Chopper will operate with either the blade or the Whisking Accessory in place, not both.

4. Place ingredients to be processed inside the Work Bowl. For uniform consistency of processed foods, cut fruits, vegetables, and meats into 2.5 cm pieces.  
**IMPORTANT:** Do not process coffee beans or hard spices such as nutmeg as they may damage the Food Chopper.
5. Place the Lid on the Work Bowl with the Lid handle facing front. Rotate the Lid handle counterclockwise until it locks into place. The Lid will click when properly locked into place.  
**NOTE:** The Work Bowl and Lid must be locked into place for the Food Chopper to operate.
6. Slide the Speed Selection Lever to your desired setting. Press down on the PULSE/ON Button to start the Food Chopper.
7. For a coarse chop, use a pulsing motion to rapidly press and release the PULSE/ON Button until your desired results are achieved.

# PRODUCT USAGE

## WHISKING ACCESSORY USAGE

---

1. Fit the Whisking Accessory over the Drive Adapter, then rotate and press down until it rests at the bottom of the Work Bowl.
2. Place ingredients to be processed inside the Work Bowl.
3. Place the Lid on the Work Bowl with the Lid handle facing front. Rotate the Lid handle counterclockwise until it locks into place. The Lid will click when properly locked into place.
4. Slide the Speed Selection Lever to your desired setting. Press and hold the PULSE/ON Button to start the Food Chopper.

# PRODUCT USAGE (CONTINUED)

## DRIZZLE BASIN AND POUR SPOUT USAGE

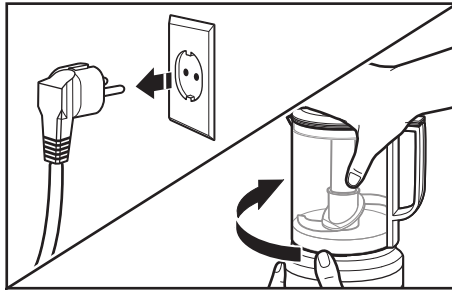
Use the Drizzle Basin to conveniently add liquid ingredients while processing dressings, mayonnaises, emulsions, sauces, and more. Use the Pour Spout for easier serving.

1. Place ingredients to be processed inside the Work Bowl.
2. Place the Lid on the Work Bowl with the Lid handle facing front. Rotate the Lid handle counterclockwise until it locks into place. The Lid will click when properly locked into place.
3. Press rapidly up and down on the PULSE/ON Button to get your ingredients moving in the Work Bowl.
4. Slowly pour liquids, such as oil, into the Drizzle Basin. The liquid will be efficiently and thoroughly mixed into the ingredients as they spin inside the Work Bowl.
5. Once processing is complete, remove the Lid and blade to use the Pour Spout.

## PRODUCT DISASSEMBLY

### DISASSEMBLING THE FOOD CHOPPER

1. Be sure the Food Chopper is unplugged. Hold the Lid as shown, and rotate it clockwise to unlock. Then, lift the Lid off of the Work Bowl.



2. Pull the blade straight up to remove it from the Work Bowl.
3. Pull the Drive Adaptor straight up to remove it from the Work Bowl.
4. Hold the base steady with one hand, and use the other hand to rotate the Work Bowl clockwise to unlock and lift it off of the base.

## CARE AND CLEANING

**IMPORTANT:** Be sure the appliance is unplugged before taking off or putting on parts and before cleaning. Allow the appliance to cool completely before putting on or taking off parts, and before cleaning the appliance.

1. Remove the Work Bowl, Lid, and accessories.
2. The Work Bowl, Lid, Whisking Accessory, and blade can be washed in the top dishwasher rack; or, wash all parts in hot, soapy water. Rinse and dry.
3. Wipe the base clean with a damp cloth. Do not use abrasive cleaners. Do not immerse the base in water.
4. Wrap the cord counterclockwise around the base for easy storage.

**NOTE:** For convenient storage, always reassemble the Food Chopper after cleaning.

# DECLARATION OF CONFORMITY

## FOR UNITED KINGDOM

---

This appliance has been designed, constructed and distributed in compliance with the safety requirements of UK Legislation: Electrical Equipment (Safety) Regulations 2016, Electromagnetic Compatibility Regulations 2016. The Ecodesign for Energy-Related Products and Energy Information (Amendment) (EU Exit) Regulations 2019. The Restriction of the Use of Certain Hazardous Substances in Electrical and Electronic Equipment Regulations 2012.

## FOR EUROPEAN UNION


---

This appliance has been designed, constructed, and distributed in compliance with the safety requirements of EC Directives: Low Voltage Directive 2014/35/EU, Electromagnetic Compatibility Directive 2014/30/EU, Ecodesign Directive 2009/125/EC, RoHS Directive 2011/65/EU and following amendments.

# ELECTRICAL EQUIPMENT WASTE DISPOSAL


## DISPOSAL OF PACKING MATERIAL

---

The packing material is recyclable and is marked with the recycle symbol . The various parts of the packing must therefore be disposed of responsibly and in full compliance with local authority regulations governing waste disposal.

## RECYCLING THE PRODUCT

---

- This appliance is marked in compliance with law in the EU and UK covering, Waste Electrical and Electronic Equipment (WEEE).
- By ensuring this product is disposed of correctly, you will help prevent potential negative consequences for the environment and human health, which could otherwise be caused by inappropriate waste handling of this product.
- The symbol  on the product or on the accompanying documentation indicates that it should not be treated as domestic waste but must be taken to an appropriate collection centre for the recycling of electrical and electronic equipment.

For more detailed information about treatment, recovery and recycling of this product, please contact your local city office, your household waste disposal service or the shop where you purchased the product.

# TERMS OF KITCHENAID GUARANTEE ("GUARANTEE")

## Covering U.K. - Ireland - South Africa - UAE

KitchenAid Europa, Inc., Nijverheidslaan 3, Box 5, 1853 Strombeek-Bever, Belgium ("Guarantor") grants the end-customer, who is a consumer, a Guarantee pursuant to the following terms.

### FOR U.K.:

The Guarantee applies in addition to and does not limit or affect the statutory warranty rights of the end-customer against the seller of the product. In summary, the Consumer Rights Act 2015 says products must be as described, fit for purpose and of satisfactory quality. During the expected lifespan of your product your legal rights entitle you to the following:

- Up to 30 days: if your product is faulty, then you can get an immediate refund.
- Up to six months: if your product can't be repaired or replaced, then you're entitled to a full refund, in most cases.
- Up to six years: if your product does not last a reasonable length of time you may be entitled to some money back.

These rights are subject to certain exceptions. For detailed information please visit the Citizens Advice website [www.adviceguide.org.uk](http://www.adviceguide.org.uk) or call **03454 04 05 06**.



# TERMS OF KITCHENAID GUARANTEE ("GUARANTEE") (CONTINUED)

## FOR IRELAND:

The Guarantee applies in addition to and does not limit or affect the statutory warranty rights of the end-customer against the seller of the product under the European Communities (Certain Aspects of the Sale of Consumer Goods and Associated Guarantees Regulations 2003 (S.I. No. 11/2003)) and other enactments governing the sale of consumer goods.

## FOR SOUTH AFRICA:

The Guarantee applies in addition to and does not limit or affect the statutory warranty rights of the end-customer against the seller of the product. In summary, the Consumer Protection Act, 2008 says that products must be: (i) reasonably suitable for the purpose for which they are intended; (ii) in good working order, of good quality and free of any defects; (iii) useable and durable for a reasonable period of time, having regard to the use to which they would normally be put and to all the surrounding circumstances; and (iv) in compliance with any applicable standards or any other public regulations.

During the expected lifespan of your product and where the products are not purchased online, your legal rights will entitle you to the following:

- You will be entitled to a full refund, if you did not have the opportunity to examine the product before delivery and if you rejected delivery of the product on the basis that the type and quality of the product was not as reasonably expected or did not reasonably conform to the material specifications.
- Within 5 business days after delivery: you may rescind your purchase and request a refund, if your purchase resulted from direct marketing.
- Within 10 business days after delivery: you will be entitled to a full refund, if it is found that the product was unsuitable for a particular purpose specifically communicated to you by the Guarantor.
- Within 15 business days after delivery: you will be entitled to a refund if: (i) the product was not delivered to you; or (ii) if you returned the product to the Guarantor.
- Within 6 months after delivery: you will be entitled to a refund or a replacement product, if the product is defective or fails to operate in terms of its specifications.

Where you have purchased a product online your legal rights will be governed by the Electronic Communications and Transactions Act, 2002 and you will be entitled to the following:

- Within 7 days after conclusion of the transaction or after delivery: you may cancel your purchase without reason and without penalty.
- Within 30 days of the date of cancellation of the transaction: you will be entitled to receive a refund, if you have already made payment.
- You will only be liable for the direct costs of returning the product to the Guarantor.

## FOR UAE:

The Guarantee applies in addition to and does not limit or affect the statutory warranty rights of the end-customer against the seller of the product.

### 1. SCOPE AND TERMS OF THE GUARANTEE

- a) The Guarantor grants the Guarantee for the products mentioned under Section 1.b) which a consumer has purchased from a seller or a company of the KitchenAid-Group within the following countries: U.K., Ireland, or South Africa, or the United Arab Emirates (UAE).
- b) The Guarantee period depends on the purchased product and is as follows:

#### **Two Year full guarantee from date of purchase.**

- c) The Guarantee period commences on the date of purchase, i.e. the date on which a consumer purchased the product from a dealer or a company of the KitchenAid-Group.
- d) The Guarantee covers the defect-free nature of the product.
- e) The Guarantor shall provide the consumer with the following services under this Guarantee, at the choice of the Guarantor, if a defect occurs during the Guarantee period:
  - Repair of the defective product or product part, or
  - Replacement of the defective product or product part. If a product is no longer available, the Guarantor is entitled to exchange the product for a product of equal or higher value.
- f) If the consumer wishes to make a claim under the Guarantee, the consumer has to contact the country specific KitchenAid service centres or the Guarantor directly at KitchenAid Europa, Inc. Nijverheidslaan 3, Box 5, 1853 Strombeek-Bever, Belgium;

Email-Address U.K.: [CONSUMERCARE.UK@kitchenaid.eu](mailto:CONSUMERCARE.UK@kitchenaid.eu)

Email-Address IRELAND: [CONSUMERCARE.IE@kitchenaid.eu](mailto:CONSUMERCARE.IE@kitchenaid.eu)

Toll Free Number U.K. & IRELAND: **00 800 381 040 26**

# TERMS OF KITCHENAID GUARANTEE ("GUARANTEE") (CONTINUED)

## FOR SOUTH-AFRICA:

### Our local KitchenAid Distributor:

KitchenAid Africa  
PO Box 52102  
V&A Waterfront  
Cape Town  
8002

### Contact our distributor:

Telephone: +27 21 555 0700

You can contact our Customer Service Centre for Small Domestic Appliances from 8.30 am to 1.00 pm and from 1.30 pm to 5.00 pm or write to us at the following address: [hello@kitchenaidafrica.com](mailto:hello@kitchenaidafrica.com)

## FOR UAE:

### AL GHANDI ELECTRONICS.

POST BOX NO. 9098,  
DUBAI, UNITED ARAB EMIRATES  
Toll free number: +971 4 2570007

- g) The costs of repair, including spare parts, and any postage costs (if applicable) for the delivery of a defect-free product or product part shall be borne by the Guarantor. The Guarantor shall also bear the postage costs for returning the defective product or product part if the Guarantor or the country specific KitchenAid customer service centre requested the return of the defective product or product part. However, the consumer shall bear the costs of appropriate packaging for the return of the defective product or product part.
- h) To be able to make a claim under the Guarantee, the consumer must present the receipt or invoice of the purchase of the product.

## 2. LIMITATIONS OF THE GUARANTEE

- a) The Guarantee applies only to products used for private purposes and not for professional or commercial purposes.
- b) The Guarantee does not apply in the case of normal wear and tear, improper or abusive use, failure to follow the instructions for use, use of the product at the wrong electrical voltage, installation and operation in violation of the applicable electrical regulations, and use of force (e.g. blows).
- c) The Guarantee does not apply if the product has been modified or converted, e.g. conversions from 120 V products to 220-240 V products.
- d) The provision of Guarantee services does not extend the Guarantee period, nor does it initiate the commencement of a new Guarantee period. The Guarantee period for installed spare parts ends with the Guarantee period for the entire product.
- e) **FOR SOUTH-AFRICA & UAE ONLY:**  
Further or other claims, in particular claims for damages, are excluded unless liability is mandatory by law.

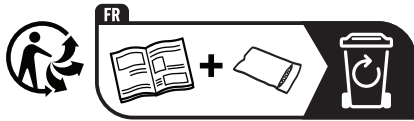
After expiry of the Guarantee period or for products for which the Guarantee does not apply, the KitchenAid customer service centres are still available to the end-customer for questions and information.

Further information is also available on our website:

- For U.K. & Ireland [www.kitchenaid.eu](http://www.kitchenaid.eu)
- For South-Africa: [www.kitchenaidafrica.com](http://www.kitchenaidafrica.com)
- For UAE: [www.KitchenAid-MEA.com](http://www.KitchenAid-MEA.com)

# PRODUCT REGISTRATION

Register your new KitchenAid appliance now: <http://www.kitchenaid.eu/register>



EAC

# KitchenAid

©2022 All rights reserved.